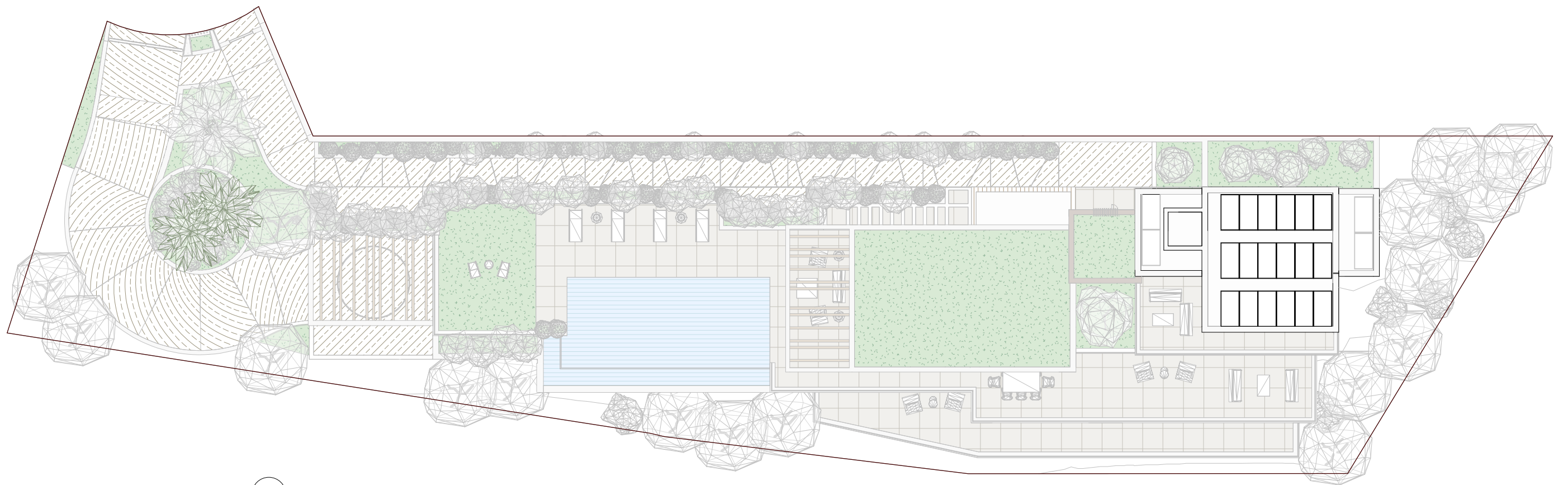


Plot surface:	1532.00 m ²
Built area basement floor:	551.70 m ²
Built area ground floor:	260.89 m ²
Built area first floor:	84.91 m ²
Total built area:	897.50 m ²

Bedrooms:	5
Bathrooms:	5
Toilets:	2
Parking space:	4



TOP VIEW

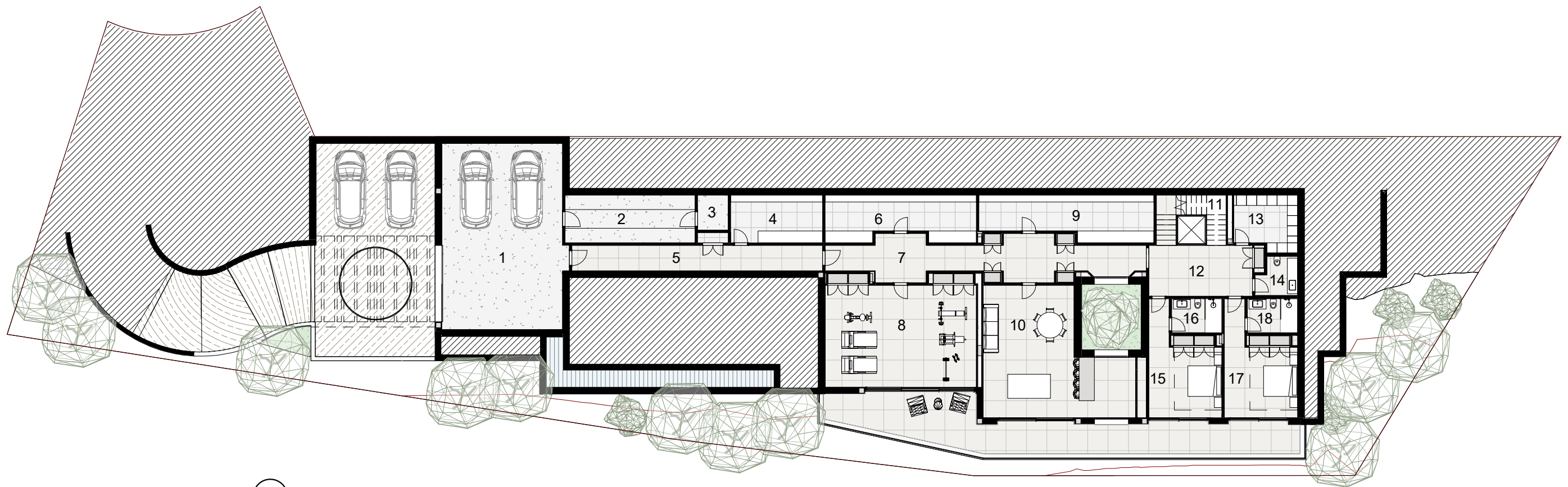


BASEMENT FLOOR - SURFACE CHART

1 Indoor parking	78.37 m ²	10 Playroom + Wine cellar	56.85 m ²
2 Technical room 1	21.42 m ²	11 Stairs	9.12 m ²
3 Technical room 2	3.69 m ²	12 Corridor 3	19.42 m ²
4 Storage 1	15.12 m ²	13 Laundry	11.58 m ²
5 Corridor 1	23.51 m ²	14 Toilet	4.98 m ²
6 Storage 2	22.61 m ²	15 Bedroom 1	23.24 m ²
7 Corridor 2	39.92 m ²	16 Bathroom 1	5.90 m ²
8 Gym	56.95 m ²	17 Bedroom 2	23.31 m ²
9 Storage 3	24.78 m ²	18 Bathroom 2	5.90 m ²
		Total	446.67 m²

Plot surface:	1532.00 m ²
Built area basement floor:	551.70 m ²
Built area ground floor:	260.89 m ²
Built area first floor:	84.91 m ²
Total built area:	897.50 m²

Bedrooms:	5
Bathrooms:	5
Toilets:	2
Parking space:	4



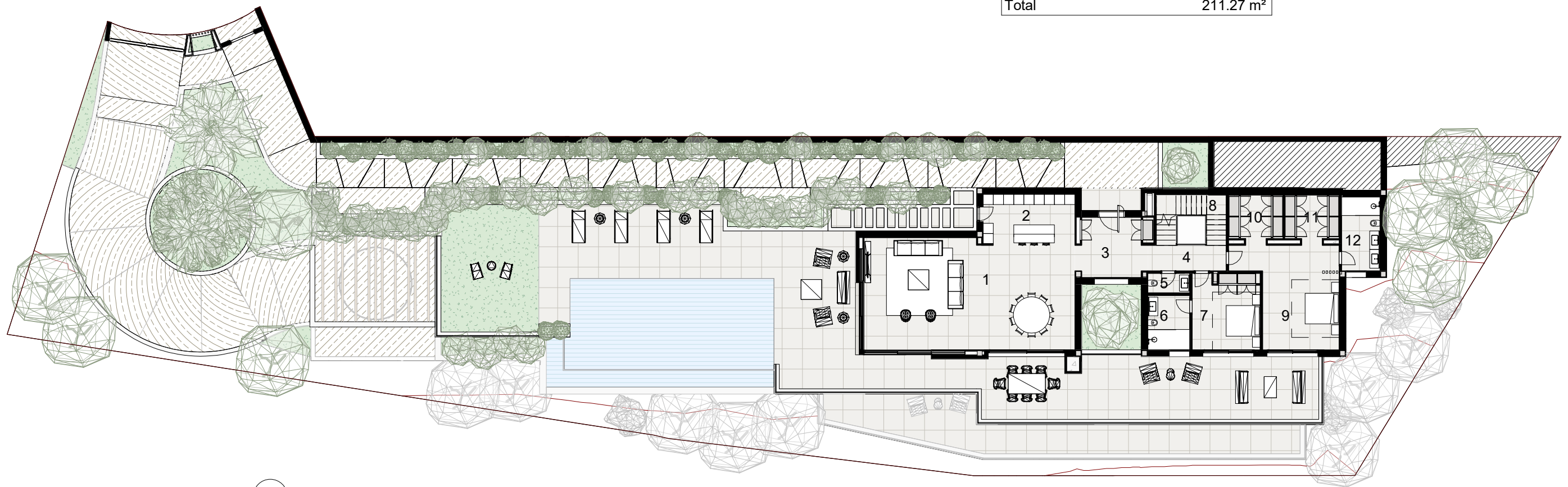
BASEMENT FLOOR



1 Living - Dining room	82.22 m ²
2 Kitchen	16.33 m ²
3 Hall	13.55 m ²
4 Corridor	7.50 m ²
5 Toilet	2.82 m ²
6 Bathroom 3	7.84 m ²
7 Bedroom 3	17.72 m ²
8 Stairs	9.12 m ²
9 Bedroom 4	30.68 m ²
10 Walk-in closet 1	8.64 m ²
11 Walk-in closet 2	5.07 m ²
12 Bathroom 4	9.79 m ²
Total	211.27 m²

Plot surface:	1532.00 m ²
Built area basement floor:	551.70 m ²
Built area ground floor:	260.89 m ²
Built area first floor:	84.91 m ²
Total built area:	897.50 m²

Bedrooms:	5
Bathrooms:	5
Toilets:	2
Parking space:	4



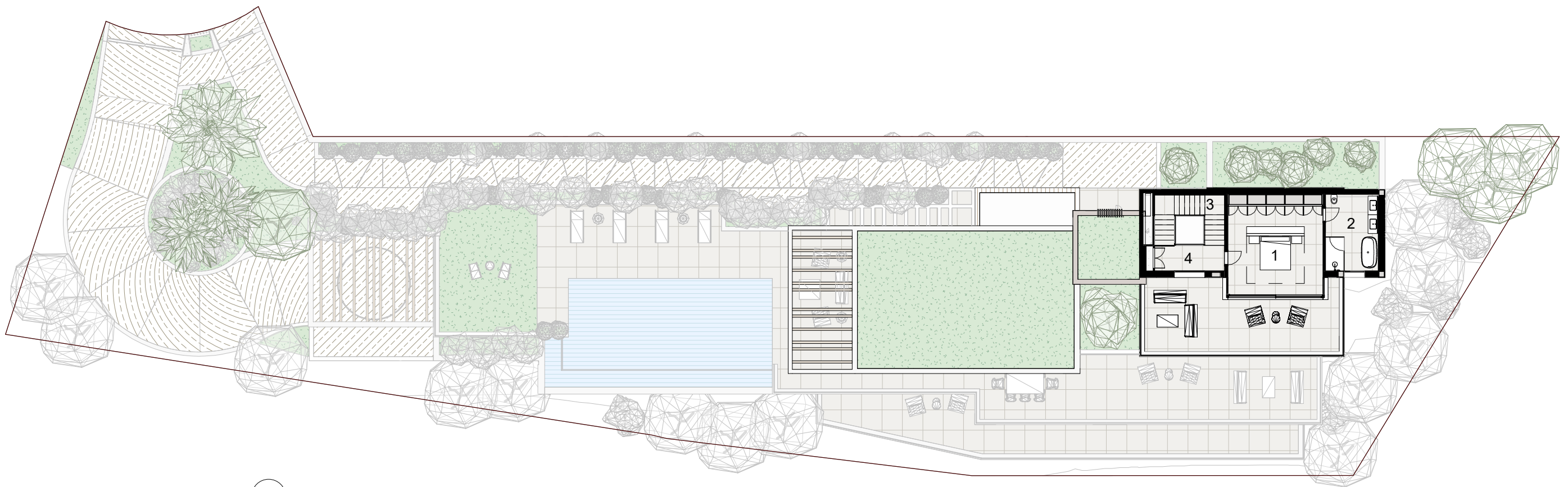
GROUND FLOOR



1 Master bedroom	32.53 m ²
2 Master bathroom	11.78 m ²
3 Stairs	9.12 m ²
4 Corridor	6.15 m ²
Total	59.58 m ²

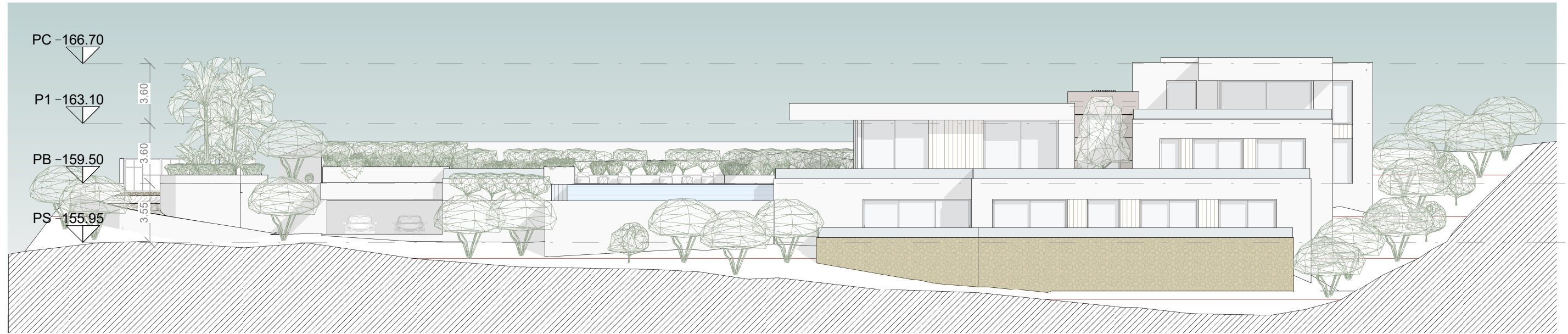
Plot surface:	1532.00 m ²
Built area basement floor:	551.70 m ²
Built area ground floor:	260.89 m ²
Built area first floor:	84.91 m ²
Total built area:	897.50 m ²

Bedrooms:	5
Bathrooms:	5
Toilets:	2
Parking space:	4



FIRST FLOOR





ELEVATION

