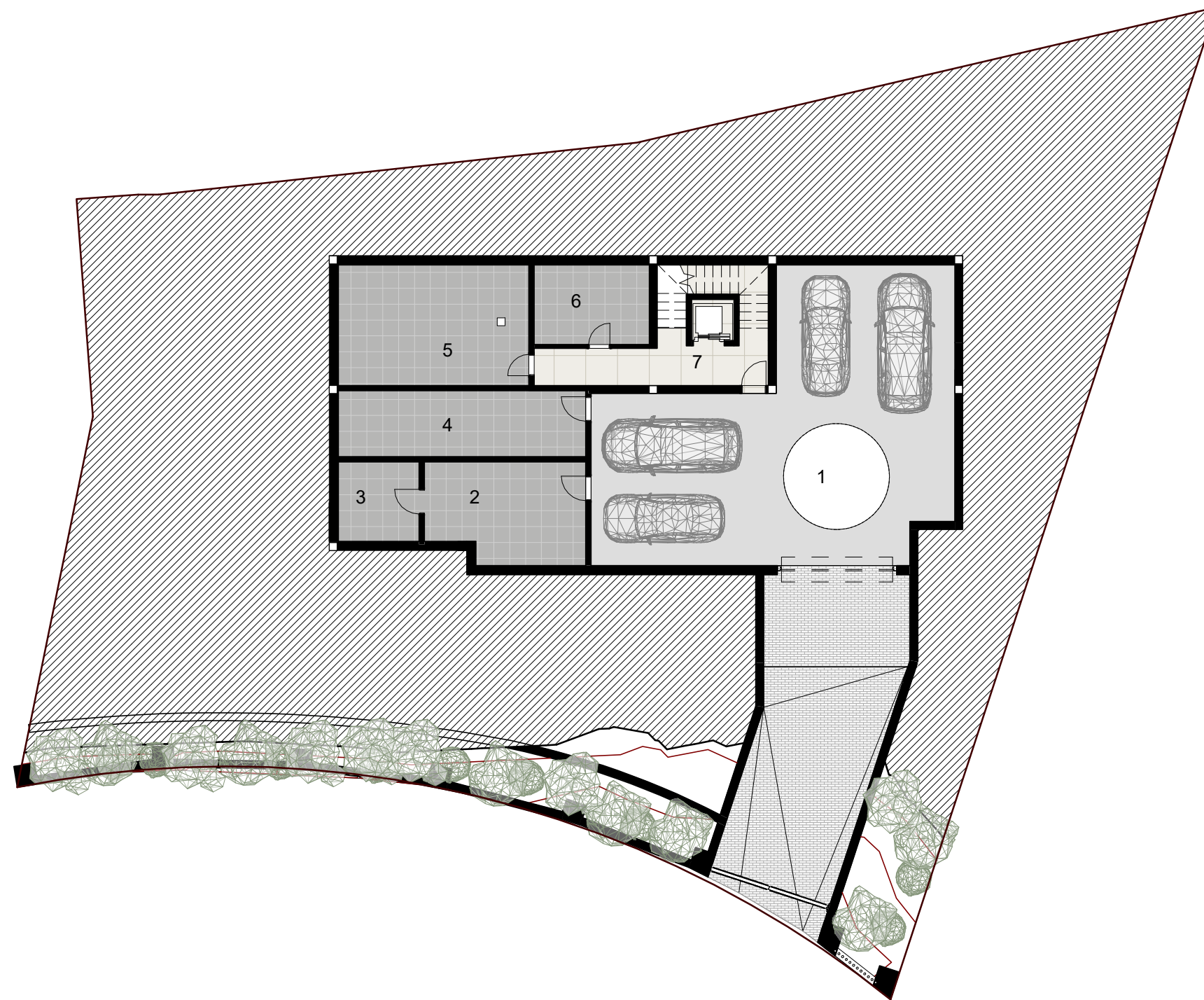


Plot surface:	1006.00 m ²
Built area basement floor 1:	280.93 m ²
Built area basement floor 2:	280.93 m ²
Built area ground floor:	162.04 m ²
Built area first floor:	159.33 m ²
Total built area:	881.34 m ²

Bedrooms:	5
Bathrooms:	5
Toilets:	3
Parking space:	4

TOP VIEW





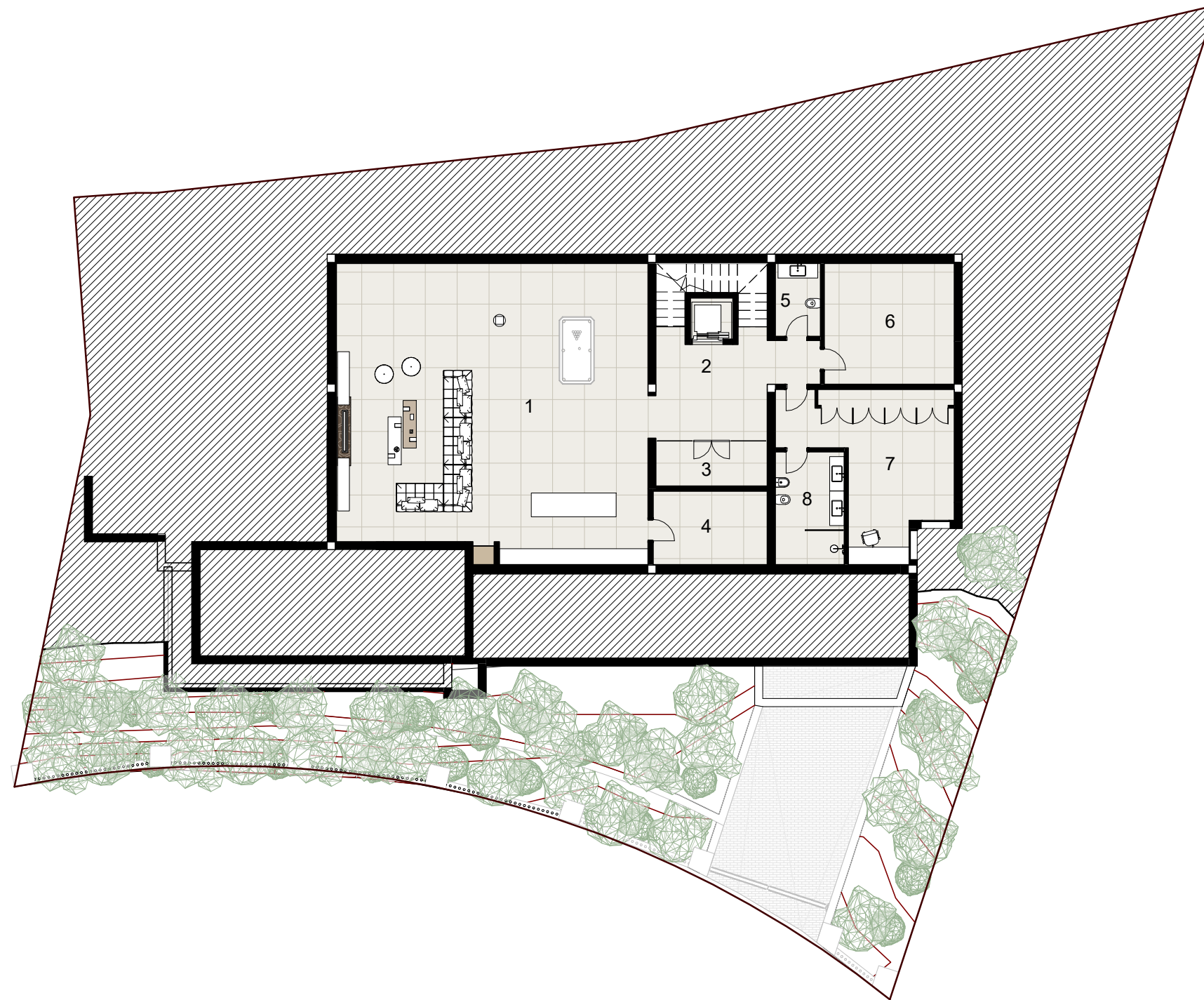
Plot surface:	1006.00 m ²
Built area basement floor 1:	280.93 m ²
Built area basement floor 2:	280.93 m ²
Built area ground floor:	162.04 m ²
Built area first floor:	159.33 m ²
Total built area:	881.34 m ²

Bedrooms:	5
Bathrooms:	5
Toilets:	3
Parking space:	4

1	Parking	119.28 m ²
2	Technical room 1	22.09 m ²
3	Technical room 2	9.15 m ²
4	Storage 1	23.24 m ²
5	Storage 2	32.67 m ²
6	Laundry	13.05 m ²
7	Hall	21.72 m ²
Total		241.21 m ²

BASEMENT FLOOR 2





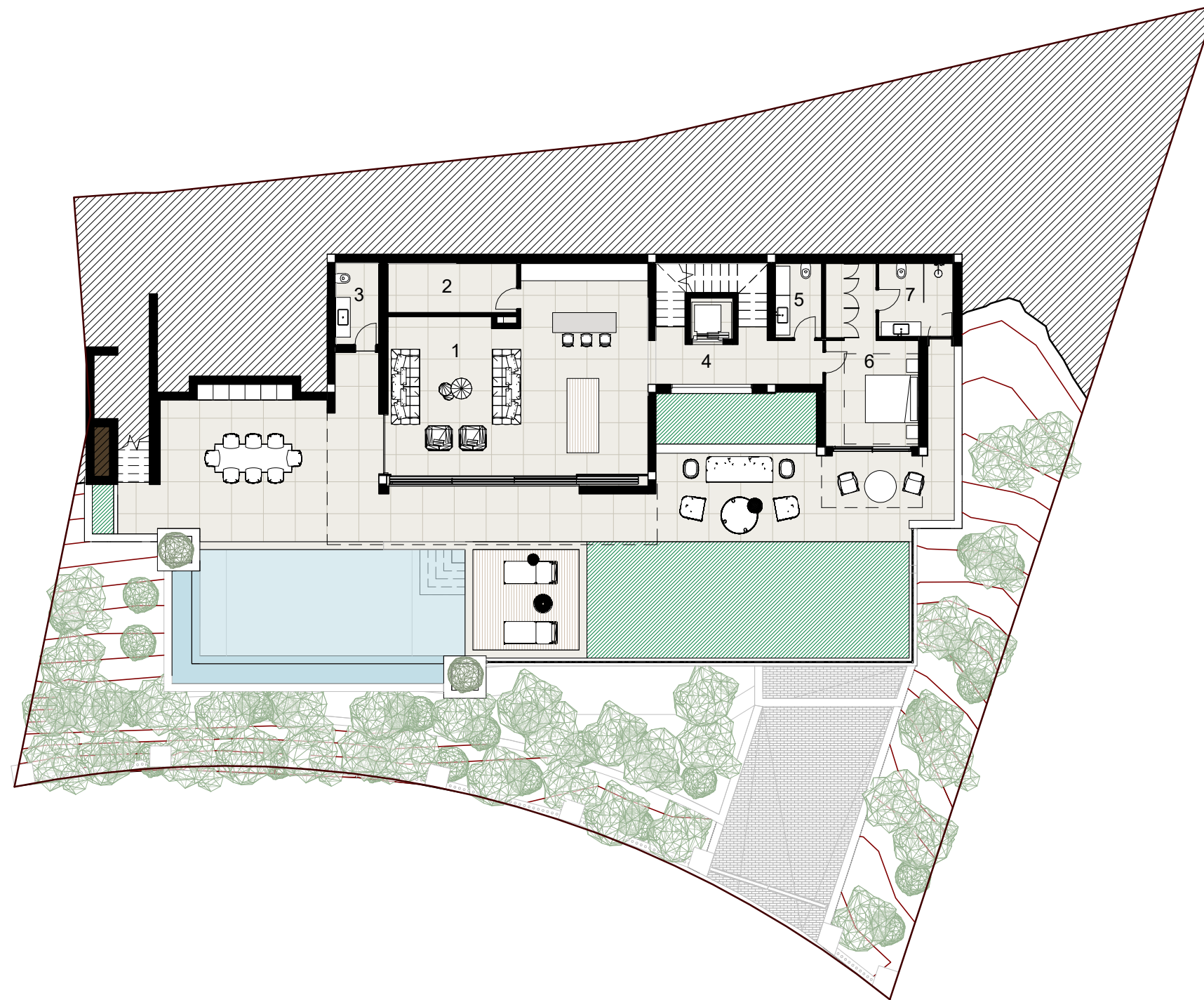
Plot surface:	1006.00 m ²
Built area basement floor 1:	280.93 m ²
Built area basement floor 2:	280.93 m ²
Built area ground floor:	162.04 m ²
Built area first floor:	159.33 m ²
Total built area:	881.34 m ²

Bedrooms:	5
Bathrooms:	5
Toilets:	3
Parking space:	4

1	Playroom	128.90 m ²
2	Hall	27.29 m ²
3	Wine cellar	6.72 m ²
4	Pantry	11.90 m ²
5	Toilet	4.68 m ²
6	Storage 3	22.30 m ²
7	Bedroom 1	29.62 m ²
8	Bathroom 1	11.05 m ²
Total		242.45 m ²

BASEMENT FLOOR 1





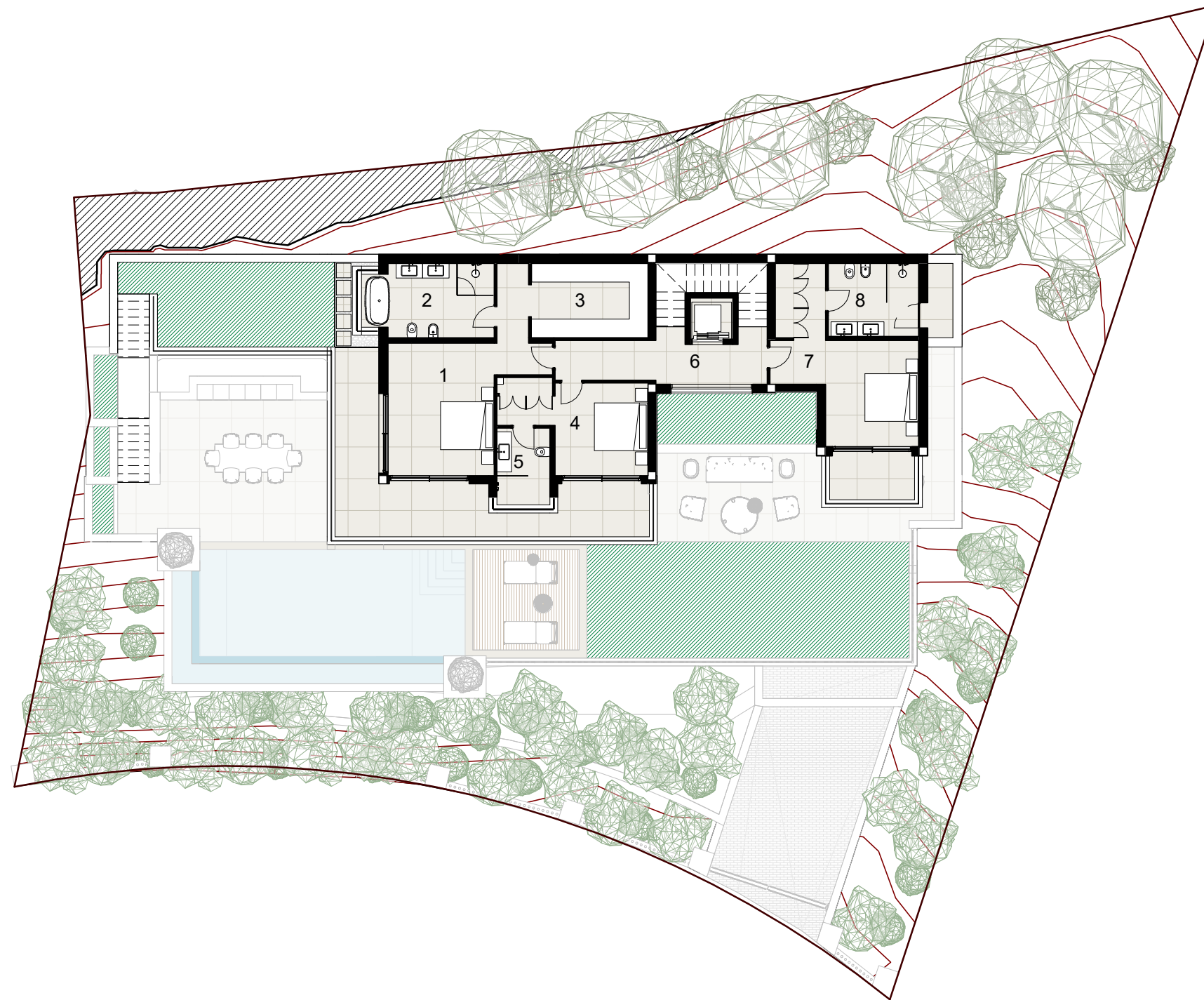
Plot surface:	1006.00 m ²
Built area basement floor 1:	280.93 m ²
Built area basement floor 2:	280.93 m ²
Built area ground floor:	162.04 m ²
Built area first floor:	159.33 m ²
Total built area:	881.34 m ²

Bedrooms:	5
Bathrooms:	5
Toilets:	3
Parking space:	4

1	Kitchen - Living - Dining room	67.41 m ²
2	Pantry	8.97 m ²
3	Outdoor toilet	5.12 m ²
4	Hall	19.18 m ²
5	Toilet	4.90 m ²
6	Bedroom 2	19.51 m ²
7	Bathroom 2	7.70 m ²
Total		132.80 m ²

GROUND FLOOR





Plot surface:	1006.00 m ²
Built area basement floor 1:	280.93 m ²
Built area basement floor 2:	280.93 m ²
Built area ground floor:	162.04 m ²
Built area first floor:	159.33 m ²
Total built area:	881.34 m ²

Bedrooms:	5
Bathrooms:	5
Toilets:	3
Parking space:	4

1	Master bedroom	26.24 m ²
2	Master bathroom	13.20 m ²
3	Walk-in closet	12.32 m ²
4	Bedroom 3	16.13 m ²
5	Bathroom 3	5.80 m ²
6	Hallway	20.91 m ²
7	Bedroom 4	22.99 m ²
8	Bathroom 4	9.35 m ²
Total		126.93 m ²

FIRST FLOOR



Plot surface:	1006.00 m ²
Built area basement floor 1:	280.93 m ²
Built area basement floor 2:	280.93 m ²
Built area ground floor:	162.04 m ²
Built area first floor:	159.33 m ²



ELEVATION

