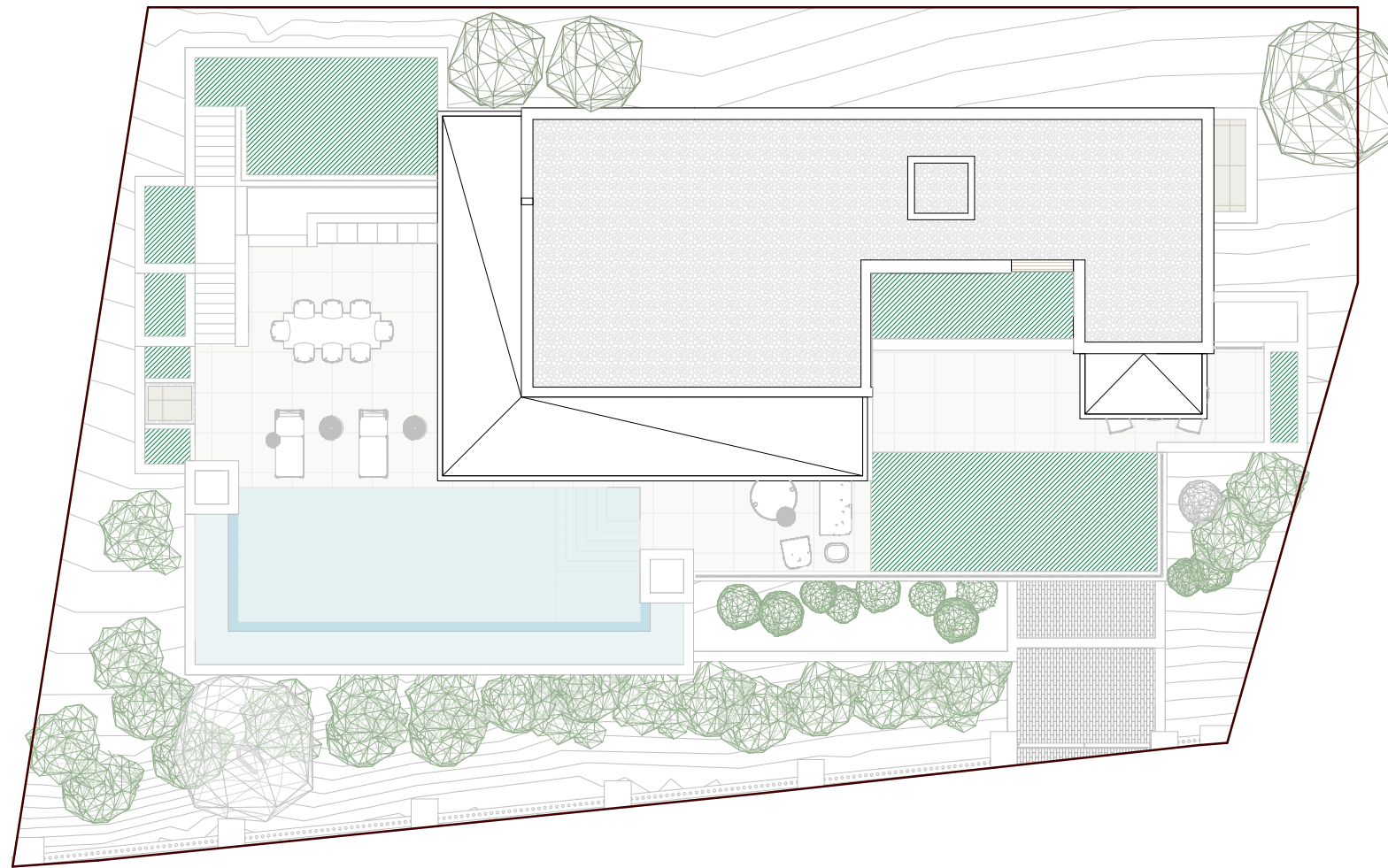


Plot surface:	873.00 m ²
Built area basement floor 1:	218.71 m ²
Built area basement floor 2:	183.43 m ²
Built area ground floor:	145.39 m ²
Built area first floor:	155.80 m ²
Total built area:	703.33 m ²

Bedrooms:	5
Bathrooms:	5
Toilets:	2
Parking space:	3



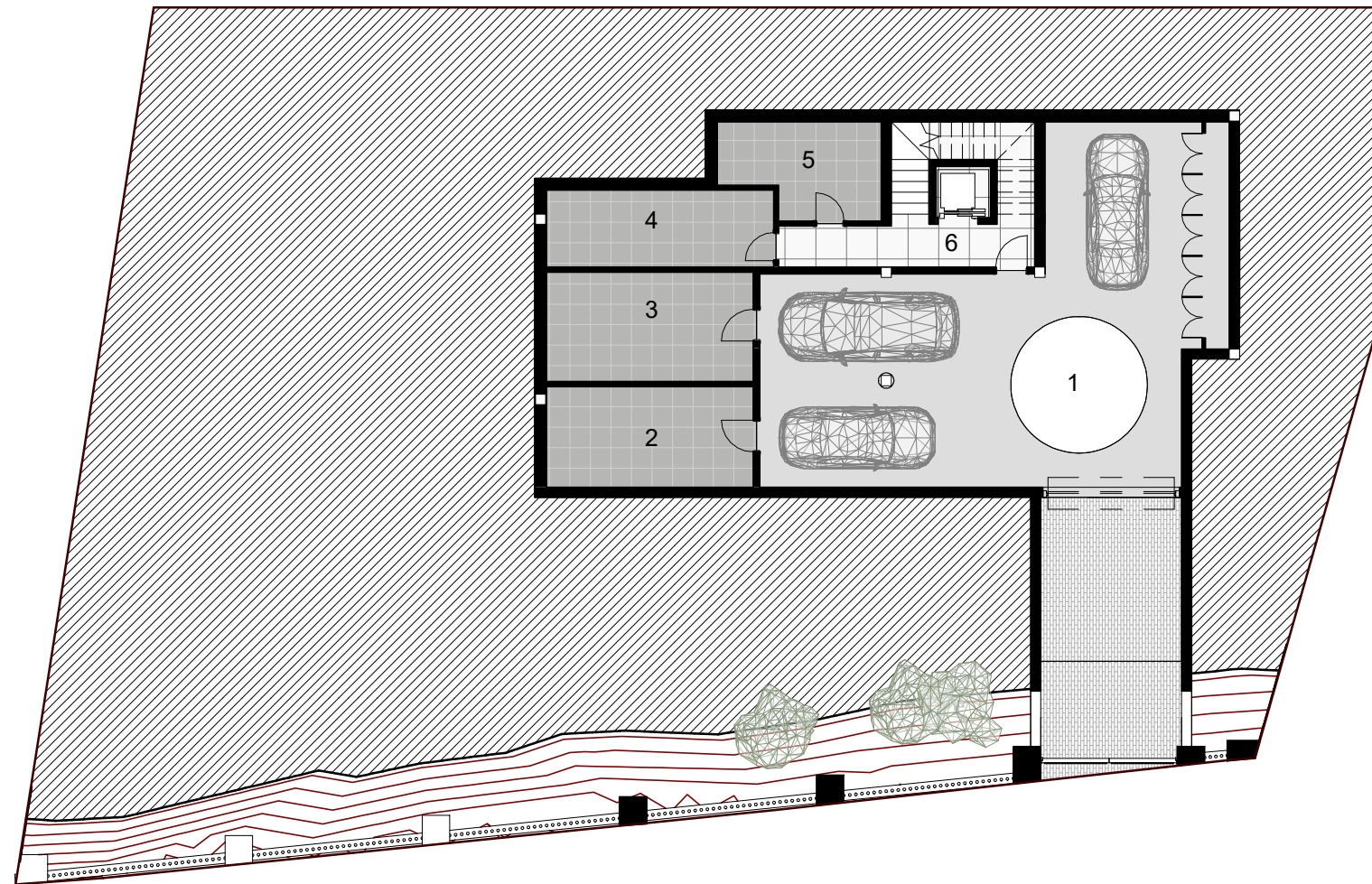
TOP VIEW



Plot surface:	873.00 m ²
Built area basement floor 1:	218.71 m ²
Built area basement floor 2:	183.43 m ²
Built area ground floor:	145.39 m ²
Built area first floor:	155.80 m ²
Total built area:	703.33 m ²

Bedrooms:	5
Bathrooms:	5
Toilets:	2
Parking space:	3

1	Parking	104.15 m ²
2	Technical room	17.85 m ²
3	Storage 1	19.36 m ²
4	Storage 2	14.96 m ²
5	Laundry	12.03 m ²
6	Hallway	18.02 m ²
Total		186.36 m ²



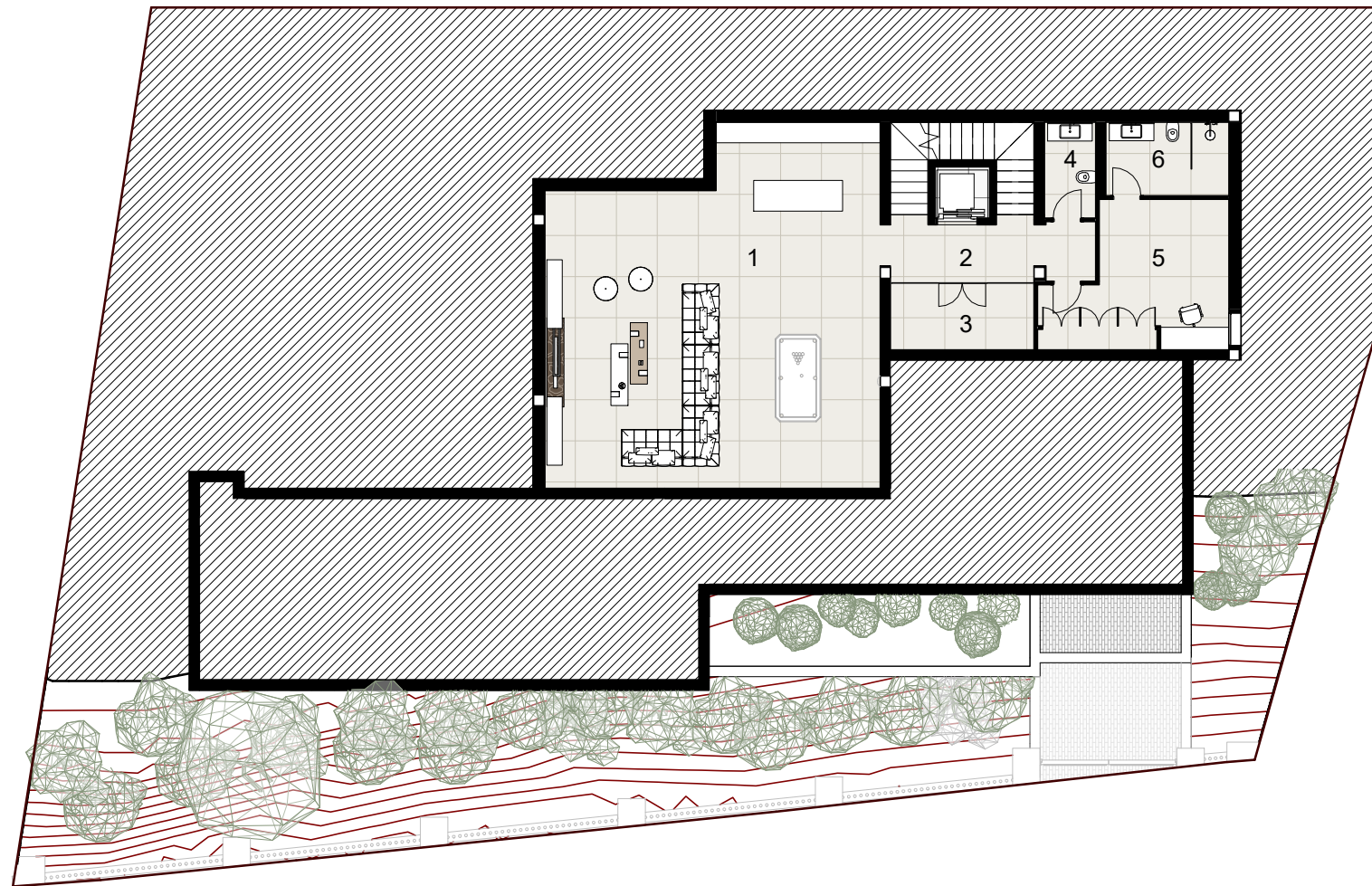
BASEMENT FLOOR 2



Plot surface:	873.00 m ²
Built area basement floor 1:	218.71 m ²
Built area basement floor 2:	183.43 m ²
Built area ground floor:	145.39 m ²
Built area first floor:	155.80 m ²
Total built area:	703.33 m ²

Bedrooms:	5
Bathrooms:	5
Toilets:	2
Parking space:	3

1	Playroom	95.05 m ²
2	Hallway	18.89 m ²
3	Wine cellar	7.98 m ²
4	Toilet	4.20 m ²
5	Bedroom 1	20.14 m ²
6	Bathroom 1	7.74 m ²
Total		153.99 m ²



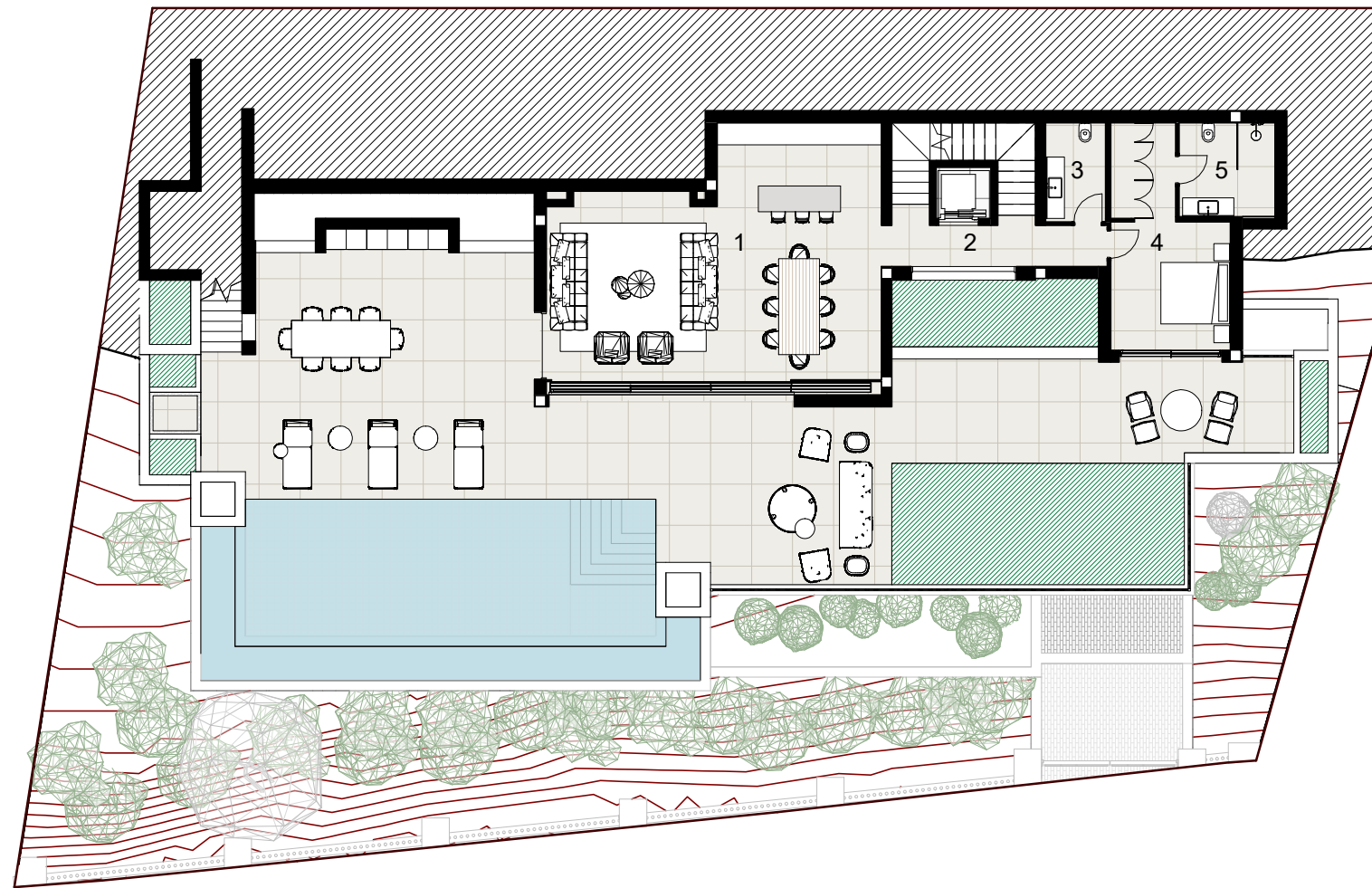
BASEMENT FLOOR 1



Plot surface:	873.00 m ²
Built area basement floor 1:	218.71 m ²
Built area basement floor 2:	183.43 m ²
Built area ground floor:	145.39 m ²
Built area first floor:	155.80 m ²
Total built area:	703.33 m ²

Bedrooms:	5
Bathrooms:	5
Toilets:	2
Parking space:	3

1 Kitchen - Living - Dining room	62.94 m ²
2 Hallway	16.73 m ²
3 Toilet	5.08 m ²
4 Bedroom 2	18.64 m ²
5 Bathroom 2	7.70 m ²
Total	111.08 m ²

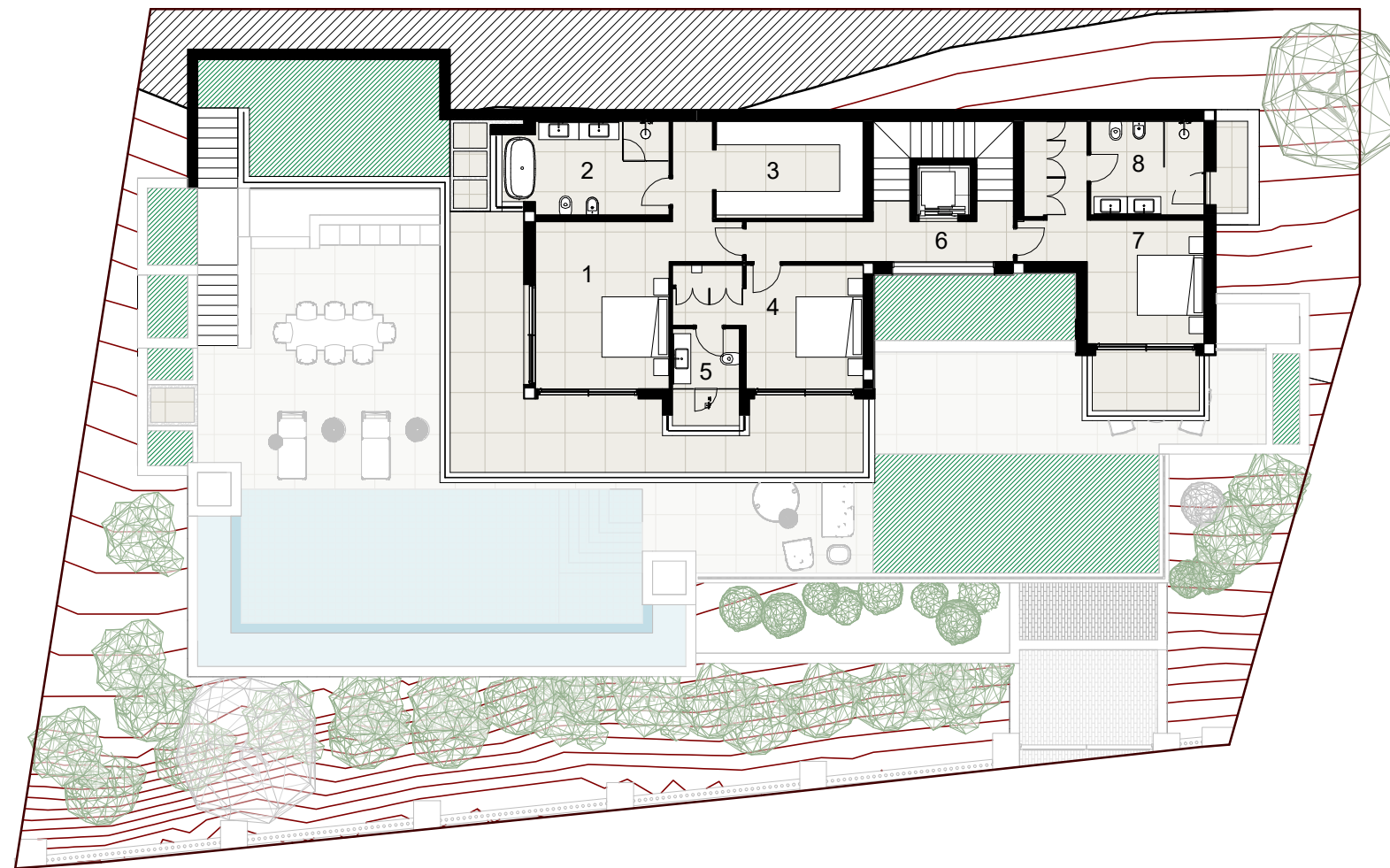


GROUND FLOOR



Plot surface:	873.00 m ²
Built area basement floor 1:	218.71 m ²
Built area basement floor 2:	183.43 m ²
Built area ground floor:	145.39 m ²
Built area first floor:	155.80 m ²
Total built area:	703.33 m ²

Bedrooms:	5
Bathrooms:	5
Toilets:	2
Parking space:	3



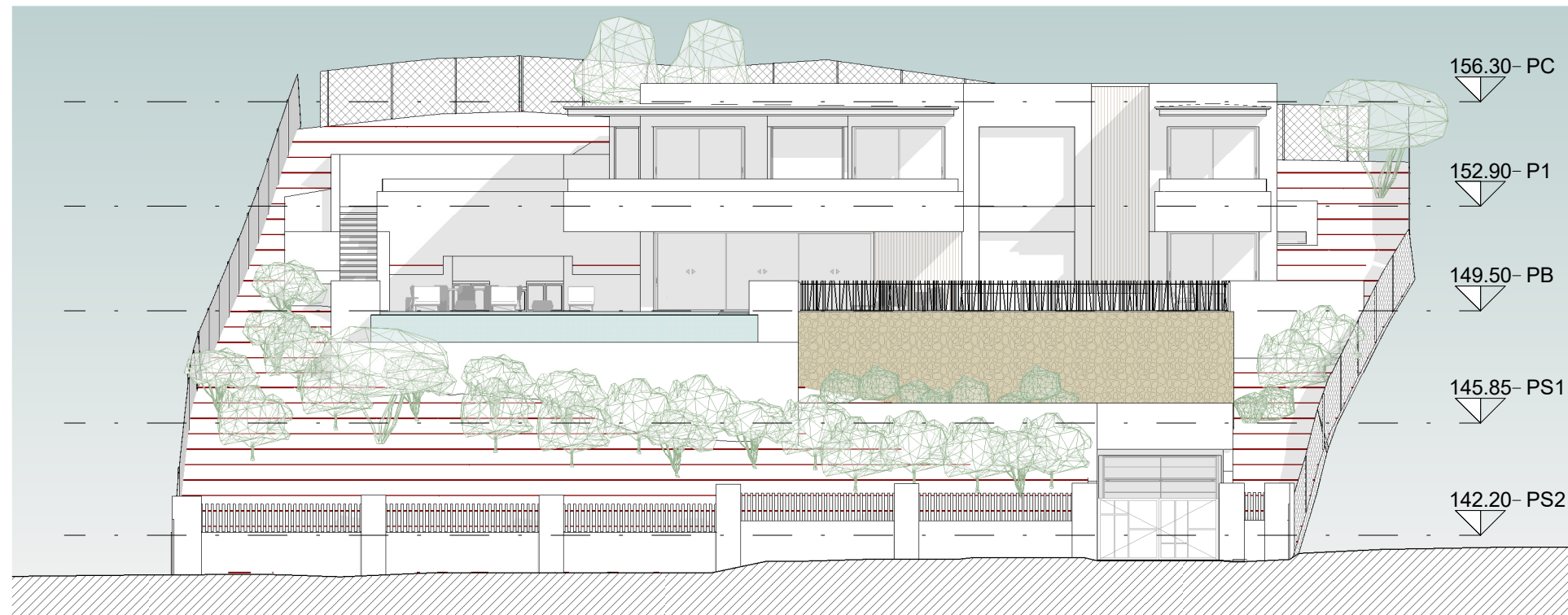
1 Master bedroom	26.24 m ²
2 Master bathroom	13.18 m ²
3 Walk-in closet	12.76 m ²
4 Bedroom 3	16.84 m ²
5 Bathroom 3	5.80 m ²
6 Hallway	18.40 m ²
7 Bedroom 4	21.17 m ²
8 Bathroom 4	9.52 m ²
Total	123.91 m ²

FIRST FLOOR



Plot surface:	873.00 m ²
Built area basement floor 1:	218.71 m ²
Built area basement floor 2:	183.43 m ²
Built area ground floor:	145.39 m ²
Built area first floor:	155.80 m ²
Total built area:	703.33 m ²

Bedrooms:	5
Bathrooms:	5
Toilets:	2
Parking space:	3



ELEVATION

