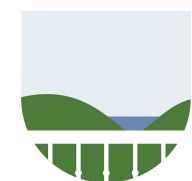
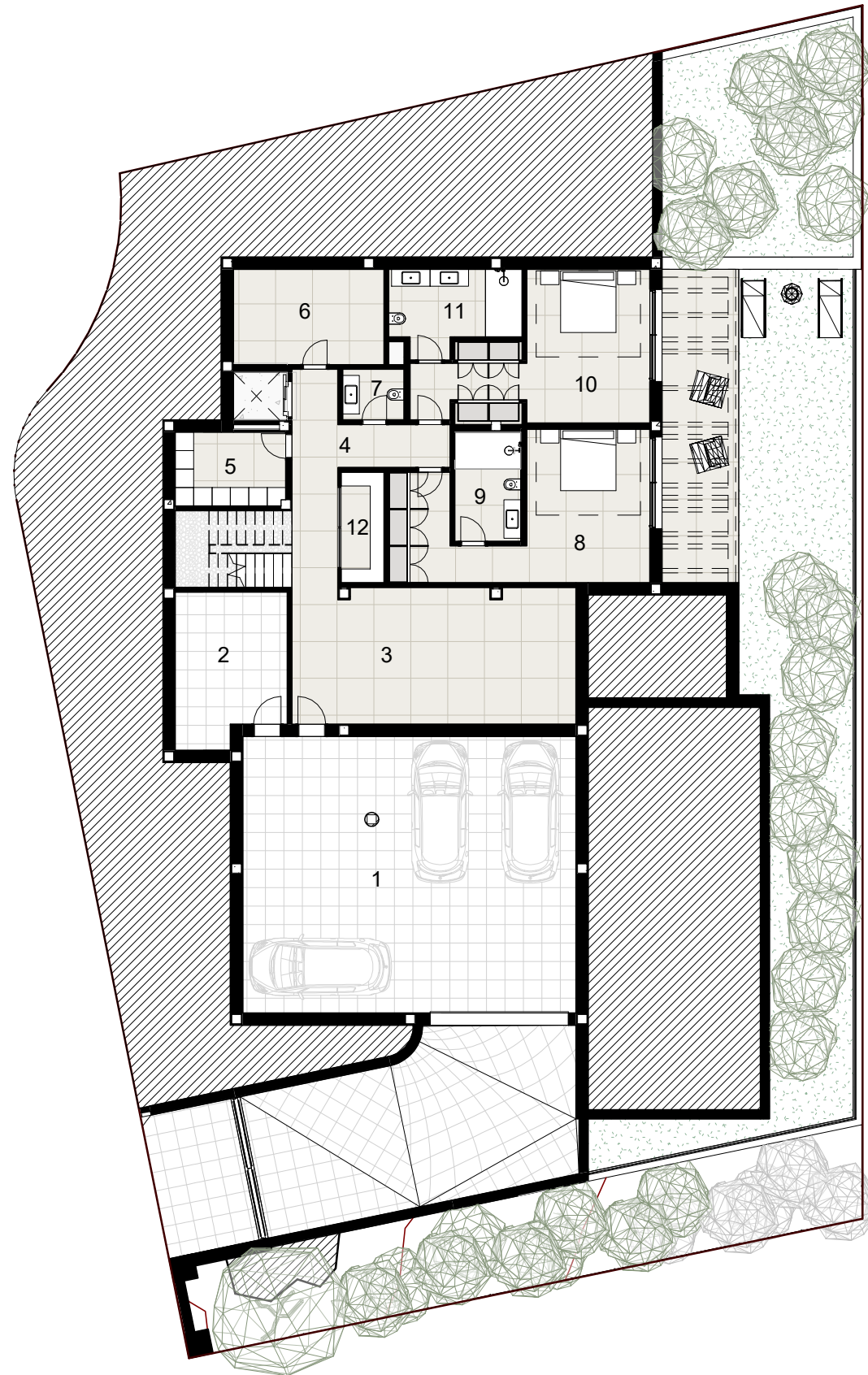


Plot surface:	981.00 m ²
Built area basement floor:	341.88 m ²
Built area ground floor:	192.69 m ²
Built area first floor:	152.65 m ²
Total built area:	687.22 m ²

Bedrooms:	6
Bathrooms:	6
Toilets:	3
Parking space:	3

TOP VIEW





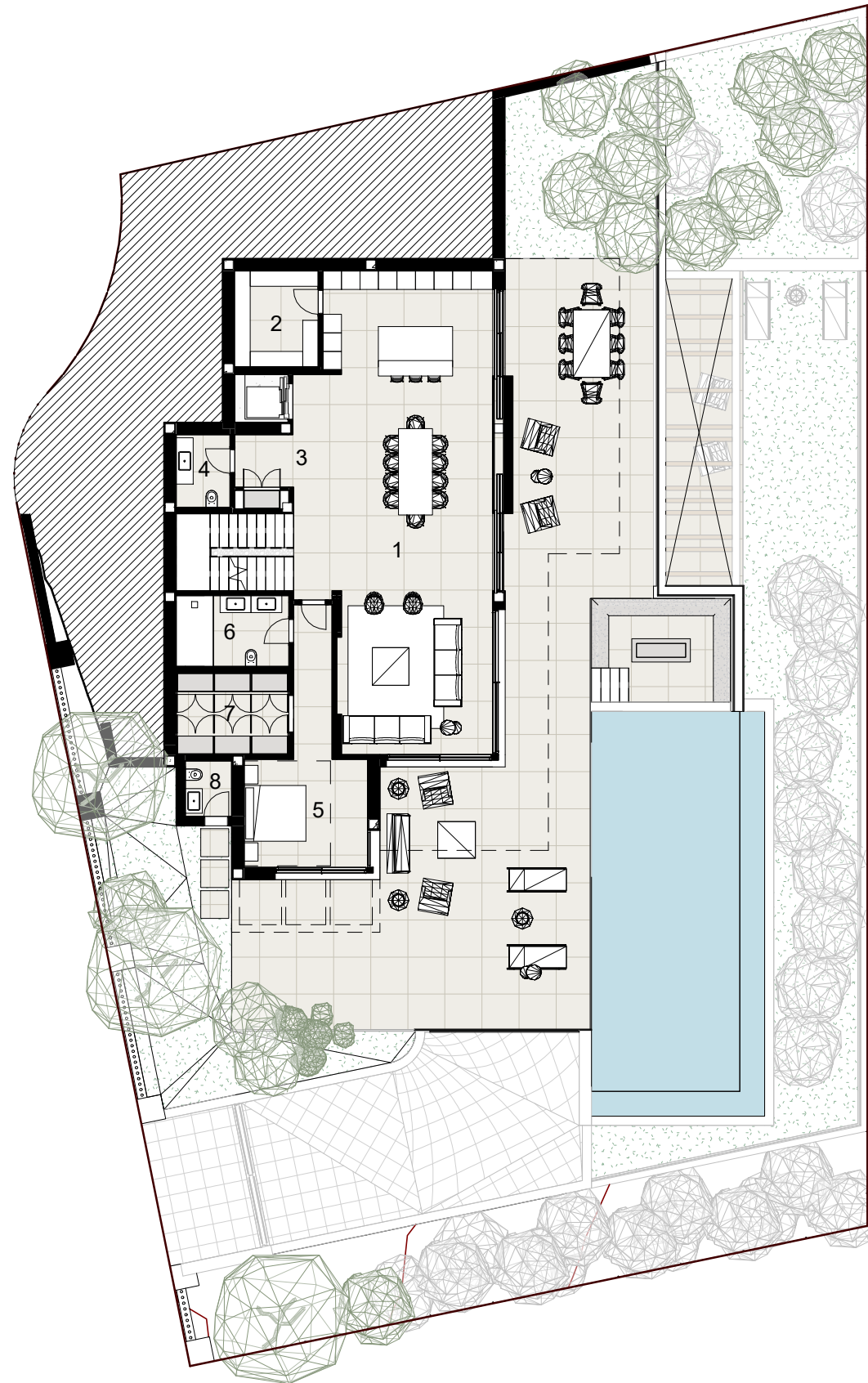
Plot surface:	981.00 m ²
Built area basement floor:	341.88 m ²
Built area ground floor:	192.69 m ²
Built area first floor:	152.65 m ²
Total built area:	687.22 m ²

Bedrooms:	6
Bathrooms:	6
Toilets:	3
Parking space:	3

1	Parking	97.49 m ²
2	Technical room	17.23 m ²
3	Playroom	40.95 m ²
4	Corridor	15.78 m ²
5	Laundry	8.61 m ²
6	Storage	15.19 m ²
7	Toilet	3.30 m ²
8	Bedroom 1	30.20 m ²
9	Bathroom 1	7.63 m ²
10	Bedroom 2	28.70 m ²
11	Bathroom 2	10.55 m ²
12	Wine cellar	5.18 m ²
Total		280.80 m ²

BASEMENT FLOOR





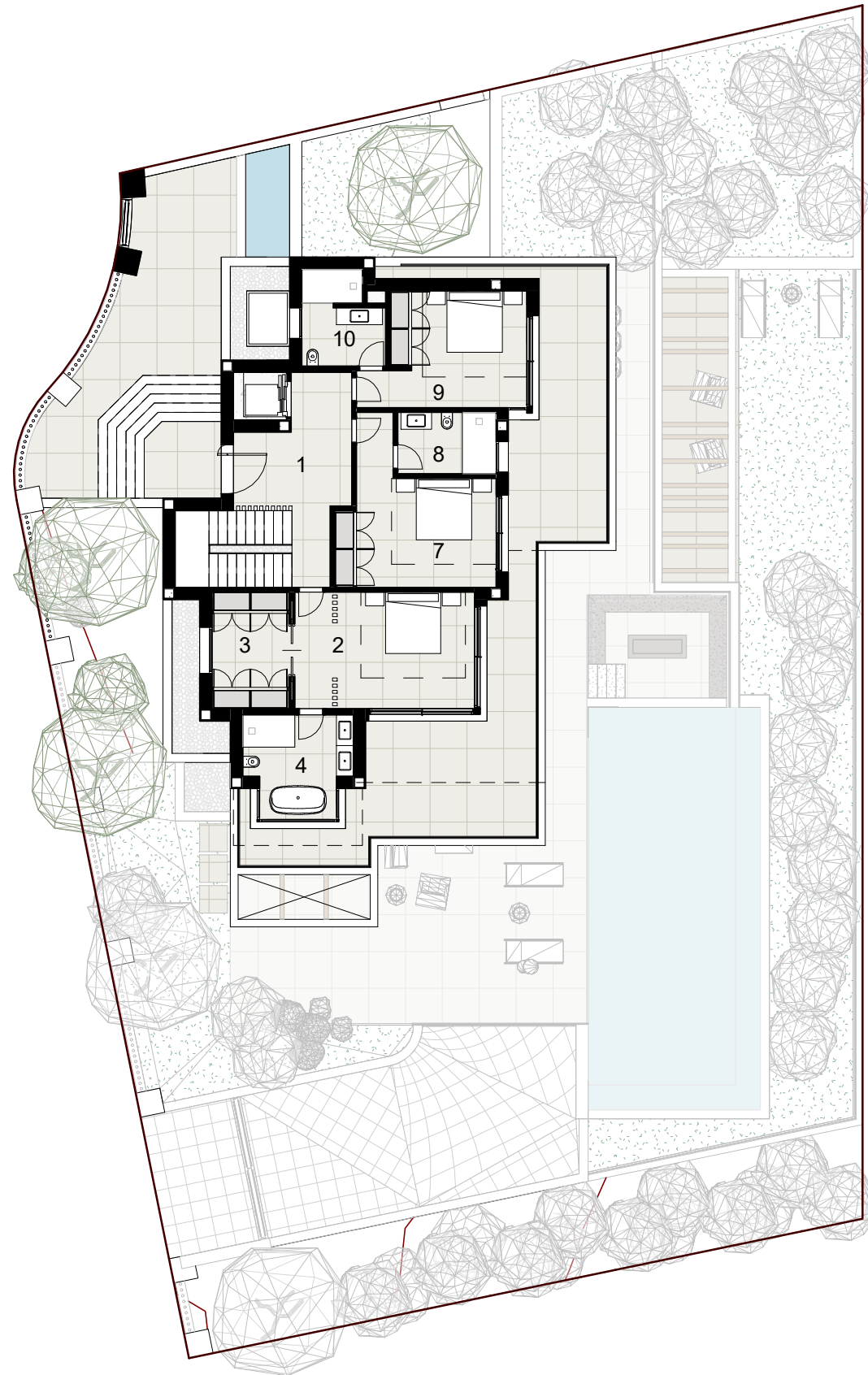
Plot surface:	981.00 m ²
Built area basement floor:	341.88 m ²
Built area ground floor:	192.69 m ²
Built area first floor:	152.65 m ²
Total built area:	687.22 m ²

Bedrooms:	6
Bathrooms:	6
Toilets:	3
Parking space:	3

1 Kitchen - Living - Dining room	81.10 m ²
2 Pantry	8.37 m ²
3 Hallway	13.61 m ²
4 Toilet	4.11 m ²
5 Bedroom 3	20.25 m ²
6 Bathroom 3	8.40 m ²
7 Walk-in closet	9.67 m ²
8 Outdoor toilet	2.70 m ²
Total	148.22 m ²

GROUND FLOOR





Plot surface:	981.00 m ²
Built area basement floor:	341.88 m ²
Built area ground floor:	192.69 m ²
Built area first floor:	152.65 m ²
Total built area:	687.22 m ²

Bedrooms:	6
Bathrooms:	6
Toilets:	3
Parking space:	3

1 Hall	16.71 m ²
2 Master bedroom	22.23 m ²
3 Walk-in closet	9.50 m ²
4 Master bathroom	10.78 m ²
7 Bedroom 4	20.48 m ²
8 Bathroom 4	6.40 m ²
9 Bedroom 5	18.13 m ²
10 Bathroom 5	7.50 m ²
Total	111.73 m ²

FIRST FLOOR



Plot surface:	981.00 m ²
Built area basement floor:	341.88 m ²
Built area ground floor:	192.69 m ²
Built area first floor:	152.65 m ²
Total built area:	687.22 m ²

Bedrooms:	6
Bathrooms:	6
Toilets:	3
Parking space:	3



ELEVATION

