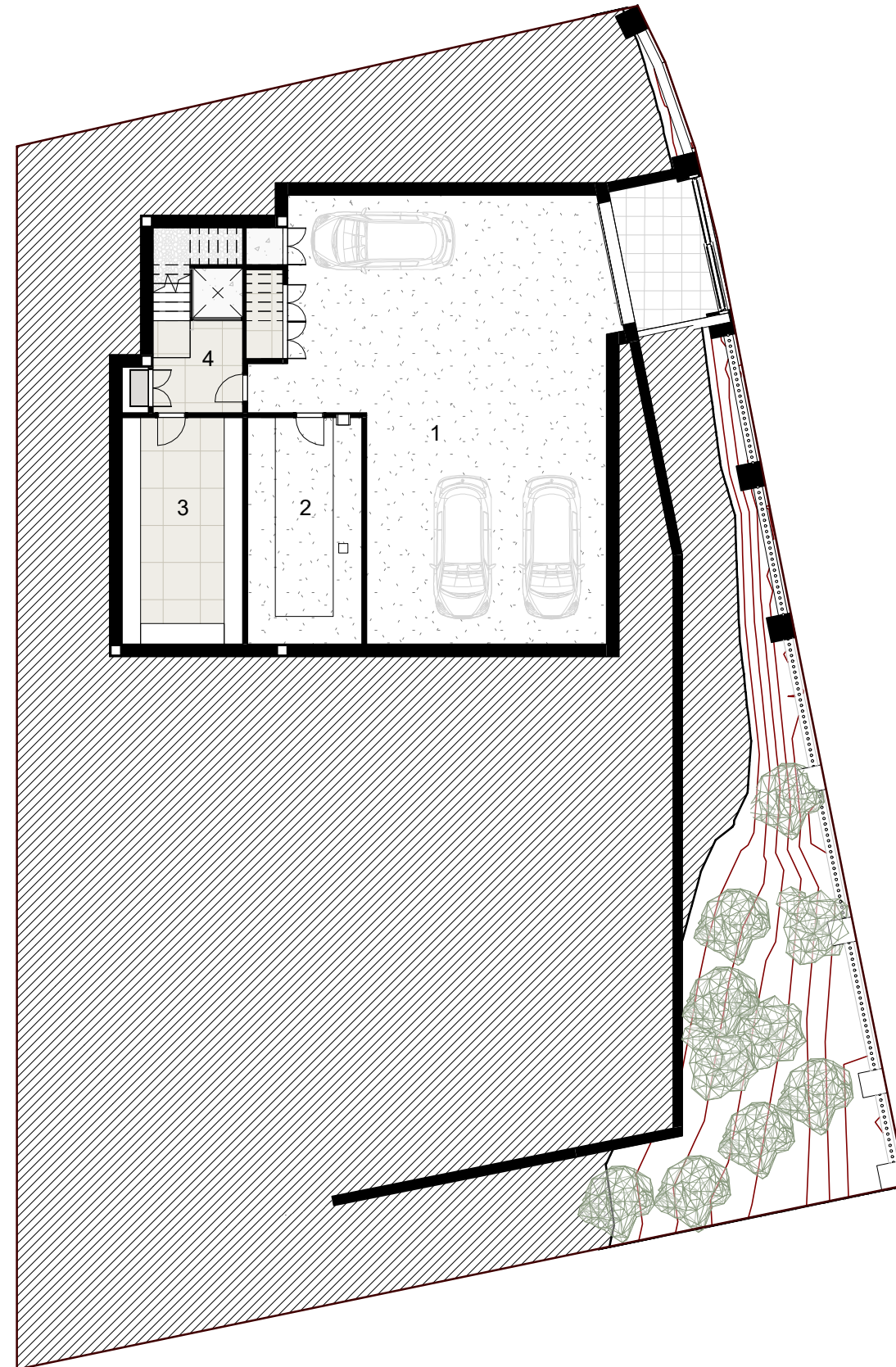


Plot surface:	983.00 m ²
Built area basement floor:	341.88 m ²
Built area ground floor:	192.69 m ²
Built area first floor:	152.65 m ²
Total built area:	687.22 m ²

Bedrooms:	6
Bathrooms:	6
Toilets:	3
Parking space:	3

TOP VIEW





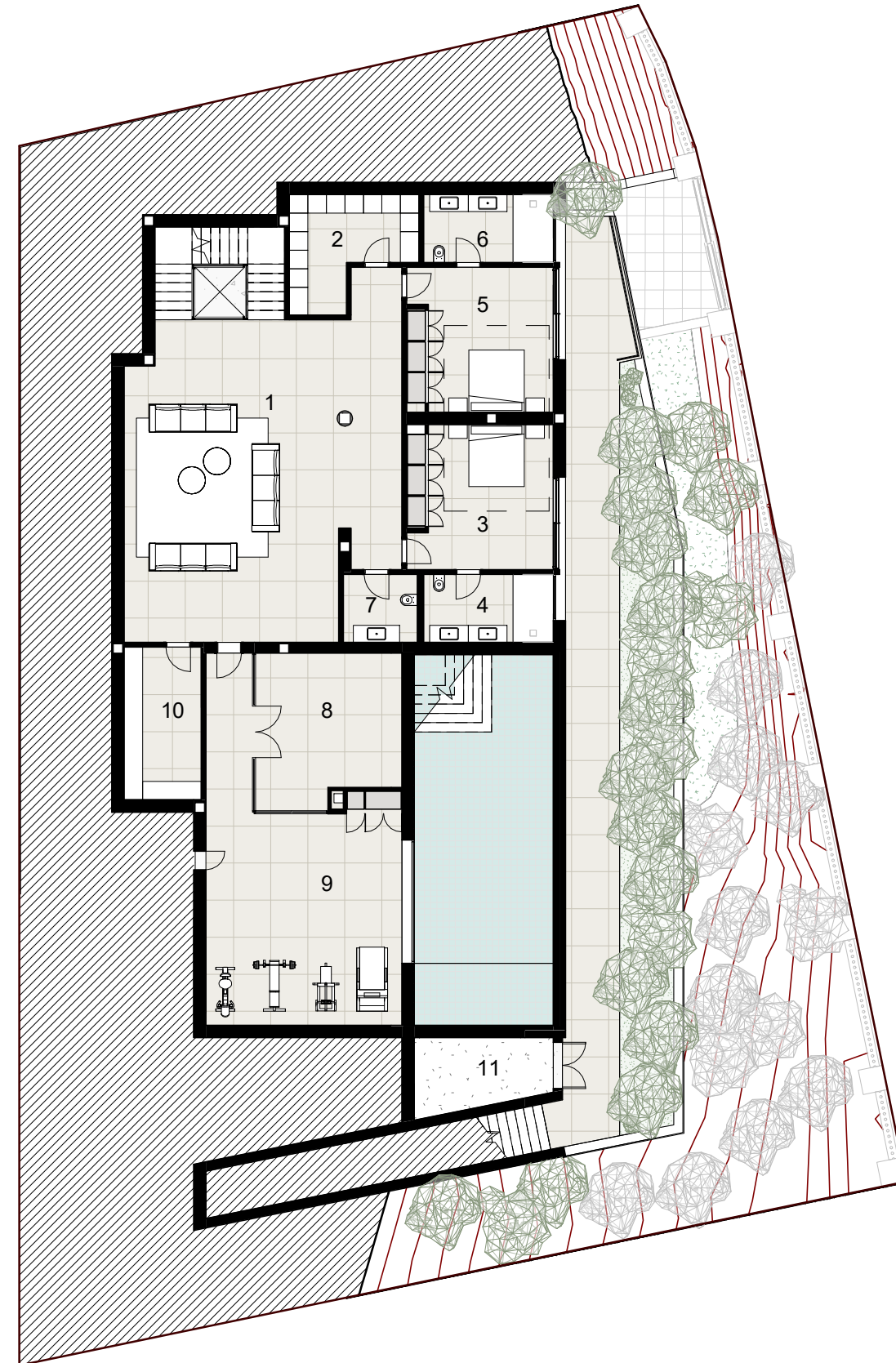
Plot surface:	983.00 m ²
Built area basement floor:	341.88 m ²
Built area ground floor:	192.69 m ²
Built area first floor:	152.65 m ²
Total built area:	687.22 m ²

Bedrooms:	6
Bathrooms:	6
Toilets:	3
Parking space:	3

1 Parking	138.52 m ²
2 Technical room	26.88 m ²
3 Storage	28.55 m ²
4 Hallway	15.95 m ²
Total general	209.90 m ²

BASEMENT FLOOR 2





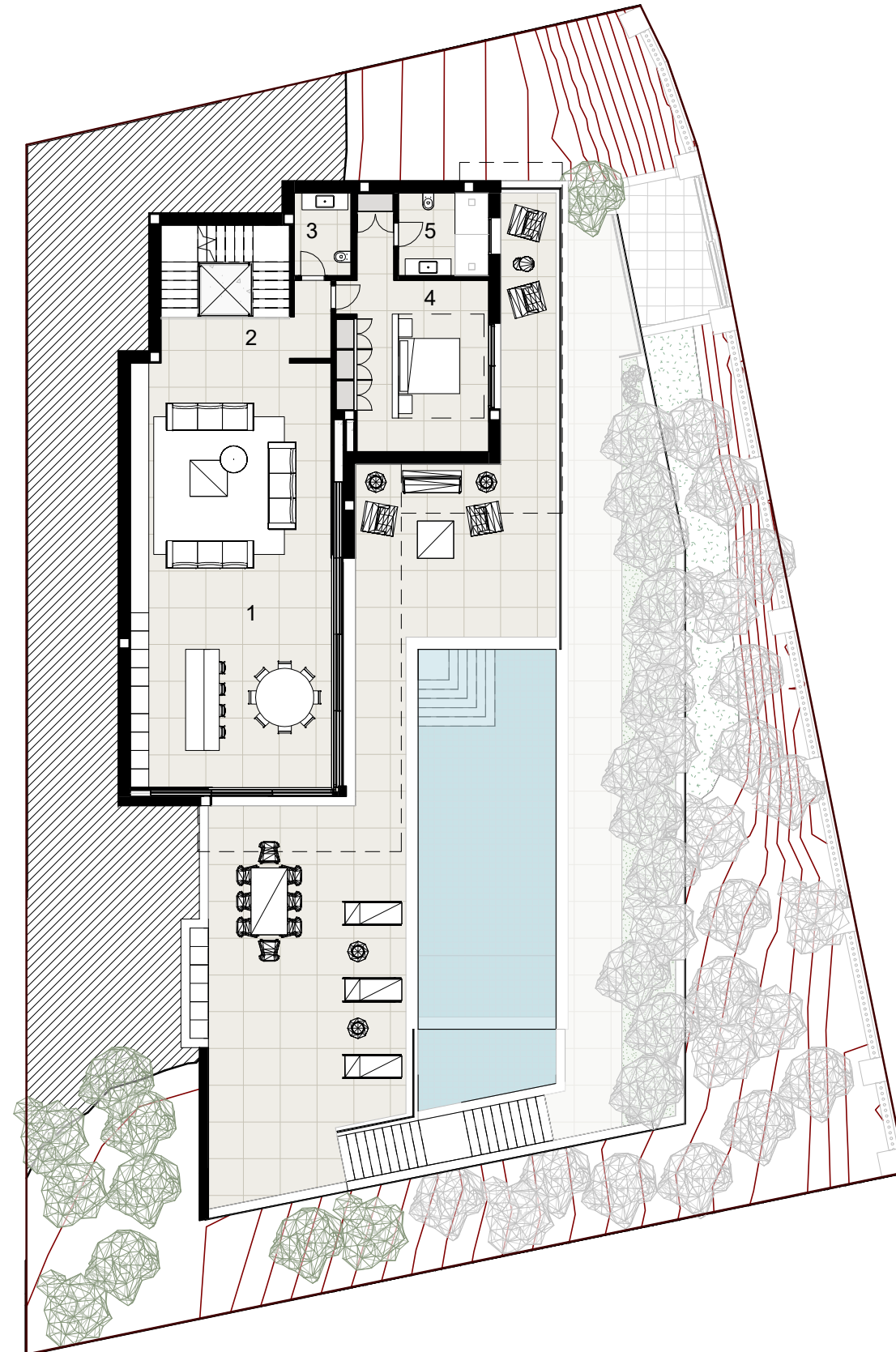
Plot surface:	983.00 m ²
Built area basement floor:	341.88 m ²
Built area ground floor:	192.69 m ²
Built area first floor:	152.65 m ²
Total built area:	687.22 m ²

Bedrooms:	6
Bathrooms:	6
Toilets:	3
Parking space:	3

1	Playroom	89.81 m ²
2	Laundry	12.38 m ²
3	Bedroom 1	22.23 m ²
4	Bathroom 1	9.24 m ²
5	Bedroom 2	22.23 m ²
6	Bathroom 2	9.24 m ²
7	Toilet	5.28 m ²
8	Spa	22.78 m ²
9	Gym	53.05 m ²
10	Storage	12.38 m ²
11	Technical room	10.00 m ²
12	Stairs	9.63 m ²
	Total general	278.25 m ²

BASEMENT FLOOR 1





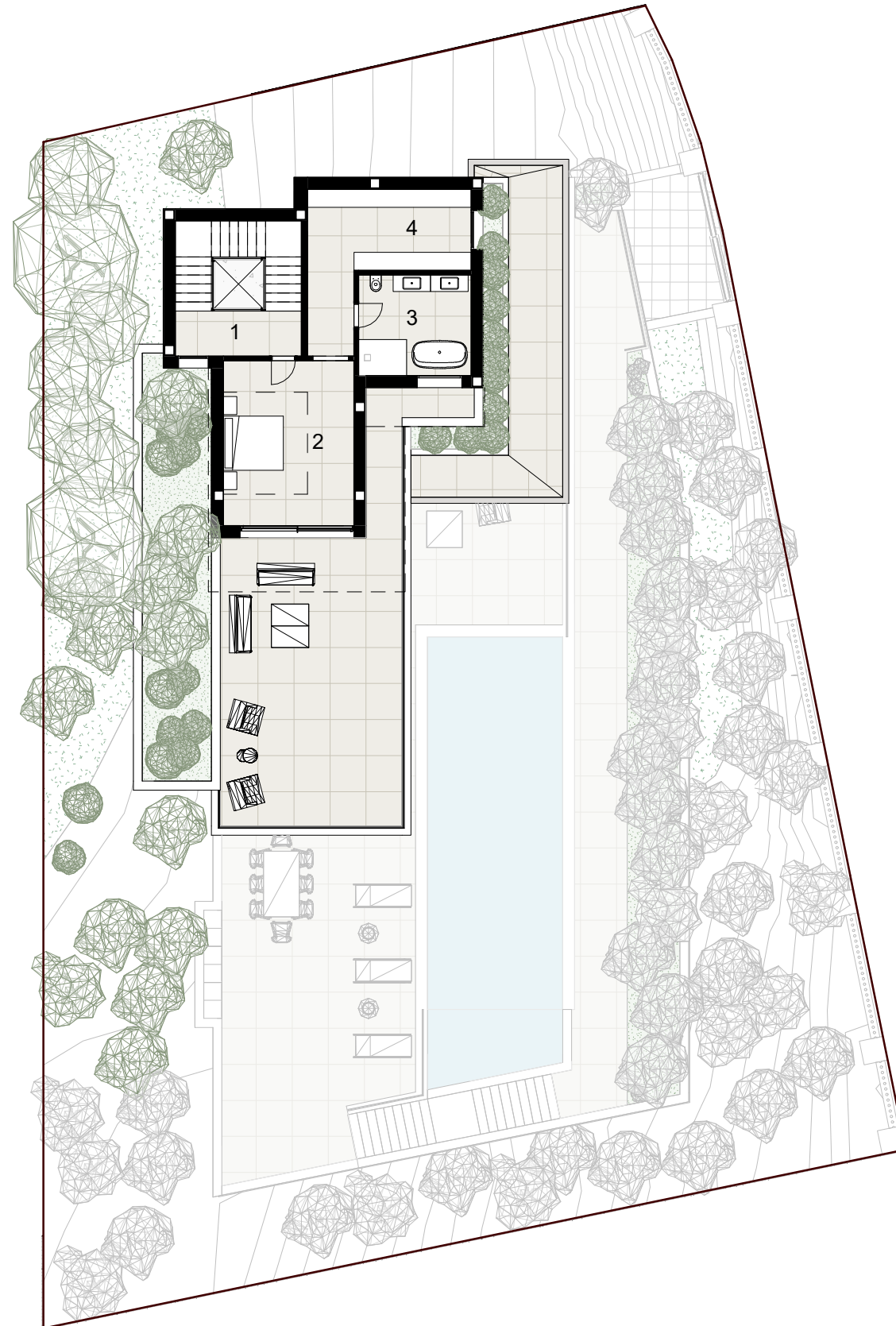
Plot surface:	983.00 m ²
Built area basement floor:	341.88 m ²
Built area ground floor:	192.69 m ²
Built area first floor:	152.65 m ²
Total built area:	687.22 m ²

Bedrooms:	6
Bathrooms:	6
Toilets:	3
Parking space:	3

1 Kitchen - Living - Dining room	94.84 m ²
2 Hallway	9.56 m ²
3 Toilet	4.99 m ²
4 Bedroom 3	30.17 m ²
5 Bathroom 3	7.97 m ²
6 Stairs	9.63 m ²
Total general	157.15 m ²

GROUND FLOOR





Plot surface:	983.00 m ²
Built area basement floor:	341.88 m ²
Built area ground floor:	192.69 m ²
Built area first floor:	152.65 m ²
Total built area:	687.22 m ²

Bedrooms:	6
Bathrooms:	6
Toilets:	3
Parking space:	3

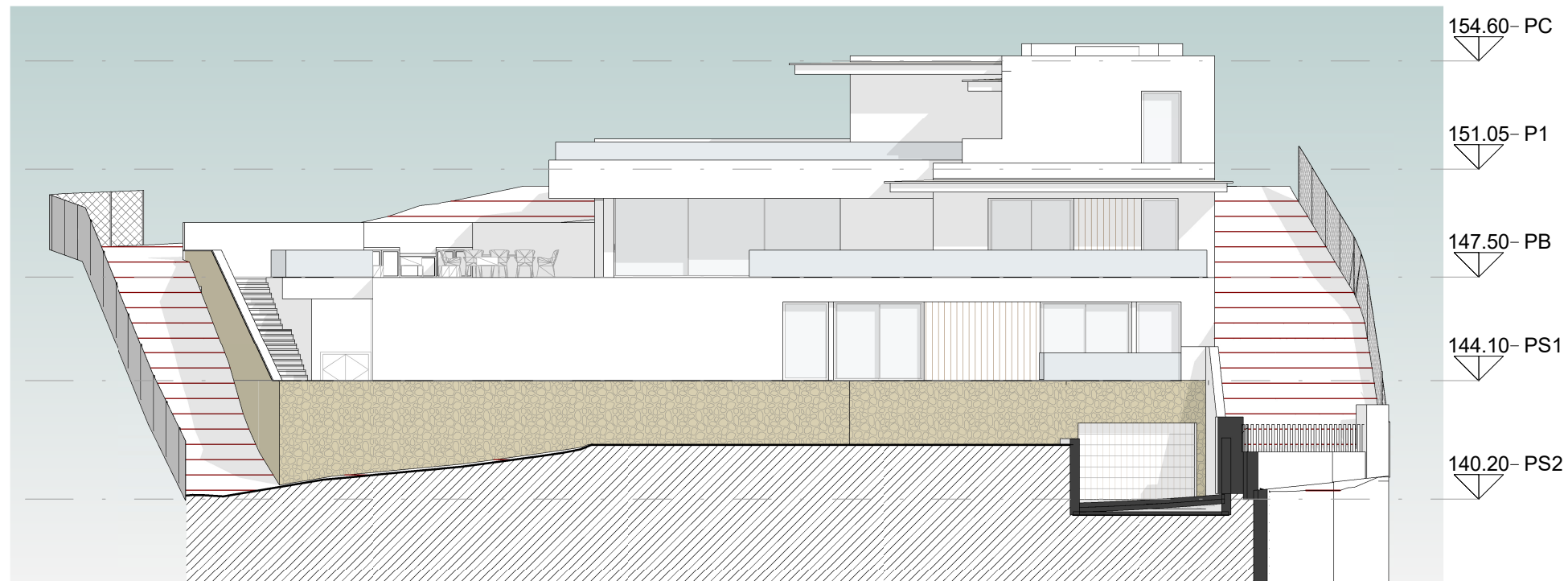
1 Hallway	6.40 m ²
2 Master bedroom	23.93 m ²
3 Master bathroom	12.56 m ²
4 Walk-in closet	19.13 m ²
5 Stairs	9.57 m ²
Total general	71.58 m ²

FIRST FLOOR



Plot surface:	983.00 m ²
Built area basement floor:	341.88 m ²
Built area ground floor:	192.69 m ²
Built area first floor:	152.65 m ²
Total built area:	687.22 m ²

Bedrooms:	6
Bathrooms:	6
Toilets:	3
Parking space:	3



ELEVATION

