

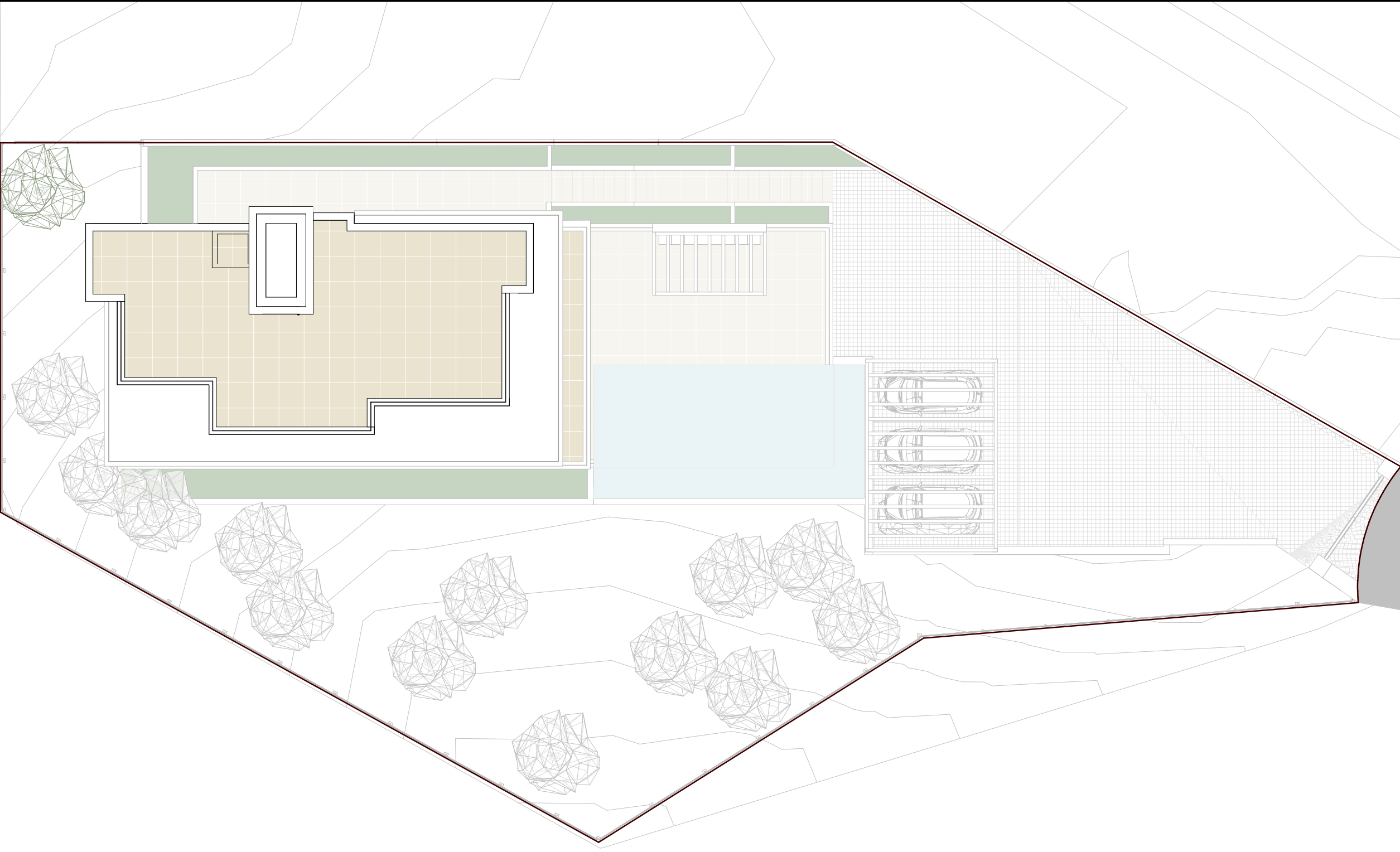
# THE VILLAS

LOS ALTOS DE  
LOS MONTEROS

# J6A

Plot surface:	1452.00 m <sup>2</sup>
Built area basement floor:	352.55 m <sup>2</sup>
Built area ground floor:	176.09 m <sup>2</sup>
Built area first floor:	179.89 m <sup>2</sup>
Built area roof floor:	15.55 m <sup>2</sup>
Total built area:	724.08 m <sup>2</sup>

Bedrooms:	5
Bathrooms:	5
Toilets:	2
Parking space:	5



TOP VIEW



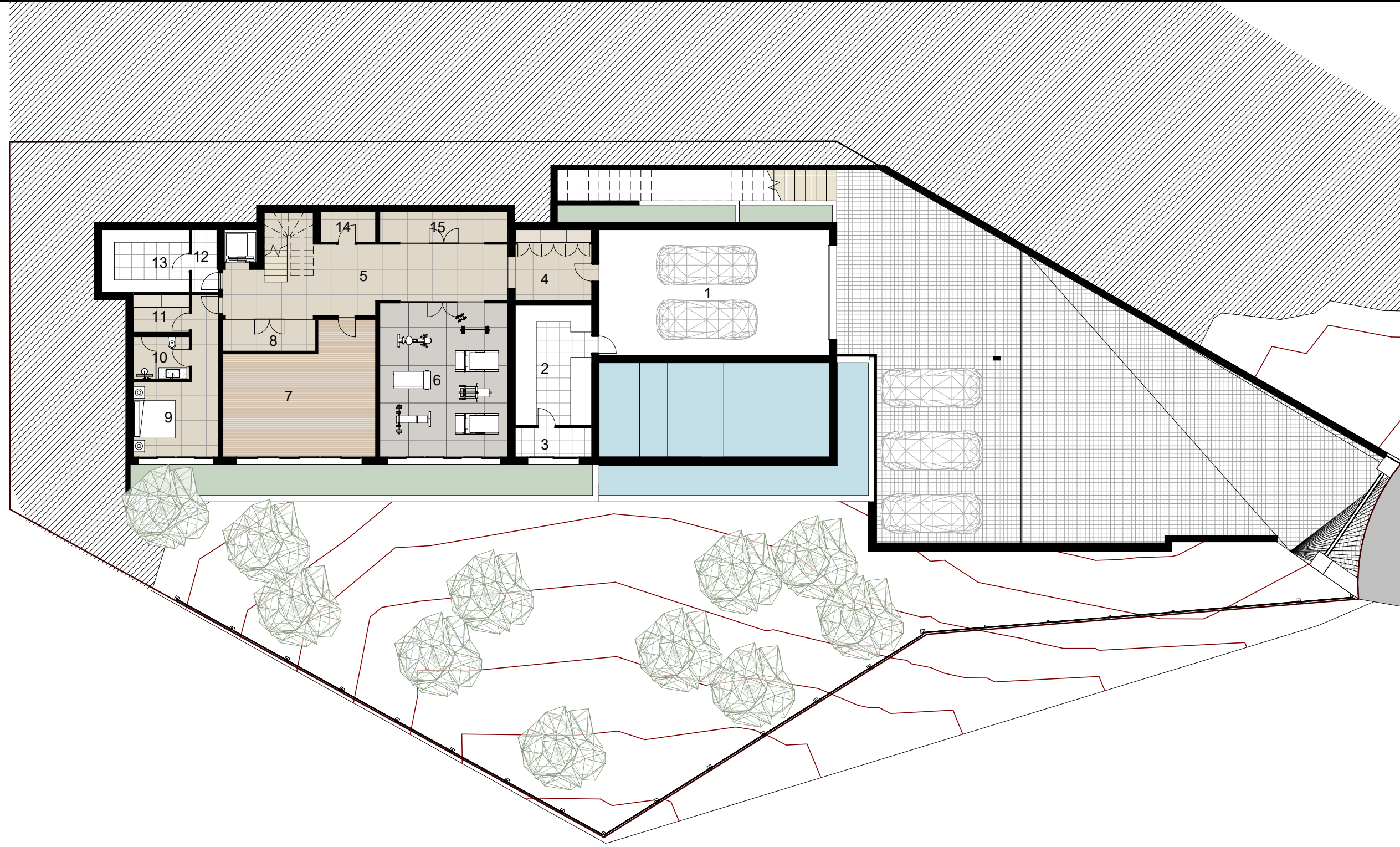
  
MARTÍNEZ GALVÁN  
ARQUITECTO



Plot surface:	1452.00 m <sup>2</sup>
Built area basement floor:	352.55 m <sup>2</sup>
Built area ground floor:	176.09 m <sup>2</sup>
Built area first floor:	179.89 m <sup>2</sup>
Built area roof floor:	15.55 m <sup>2</sup>
Total built area:	724.08 m <sup>2</sup>

Bedrooms:	5
Bathrooms:	5
Toilets:	2
Parking space:	5

1 Parking	66.01 m <sup>2</sup>
2 Technical room	20.99 m <sup>2</sup>
3 Technical room 2	5.11 m <sup>2</sup>
4 Hall	12.41 m <sup>2</sup>
5 Hallway	35.99 m <sup>2</sup>
6 Gym	44.98 m <sup>2</sup>
7 Cinema room	40.55 m <sup>2</sup>
8 Wine cellar	6.75 m <sup>2</sup>
9 Bedroom	20.06 m <sup>2</sup>
10 Bathroom	5.47 m <sup>2</sup>
11 Storage 01	4.82 m <sup>2</sup>
12 Corridor	3.78 m <sup>2</sup>
13 Storage 02	12.54 m <sup>2</sup>
14 Rack	3.84 m <sup>2</sup>
15 Storage 03	8.96 m <sup>2</sup>
16 Stairs	7.05 m <sup>2</sup>
<b>Total</b>	<b>299.32 m<sup>2</sup></b>



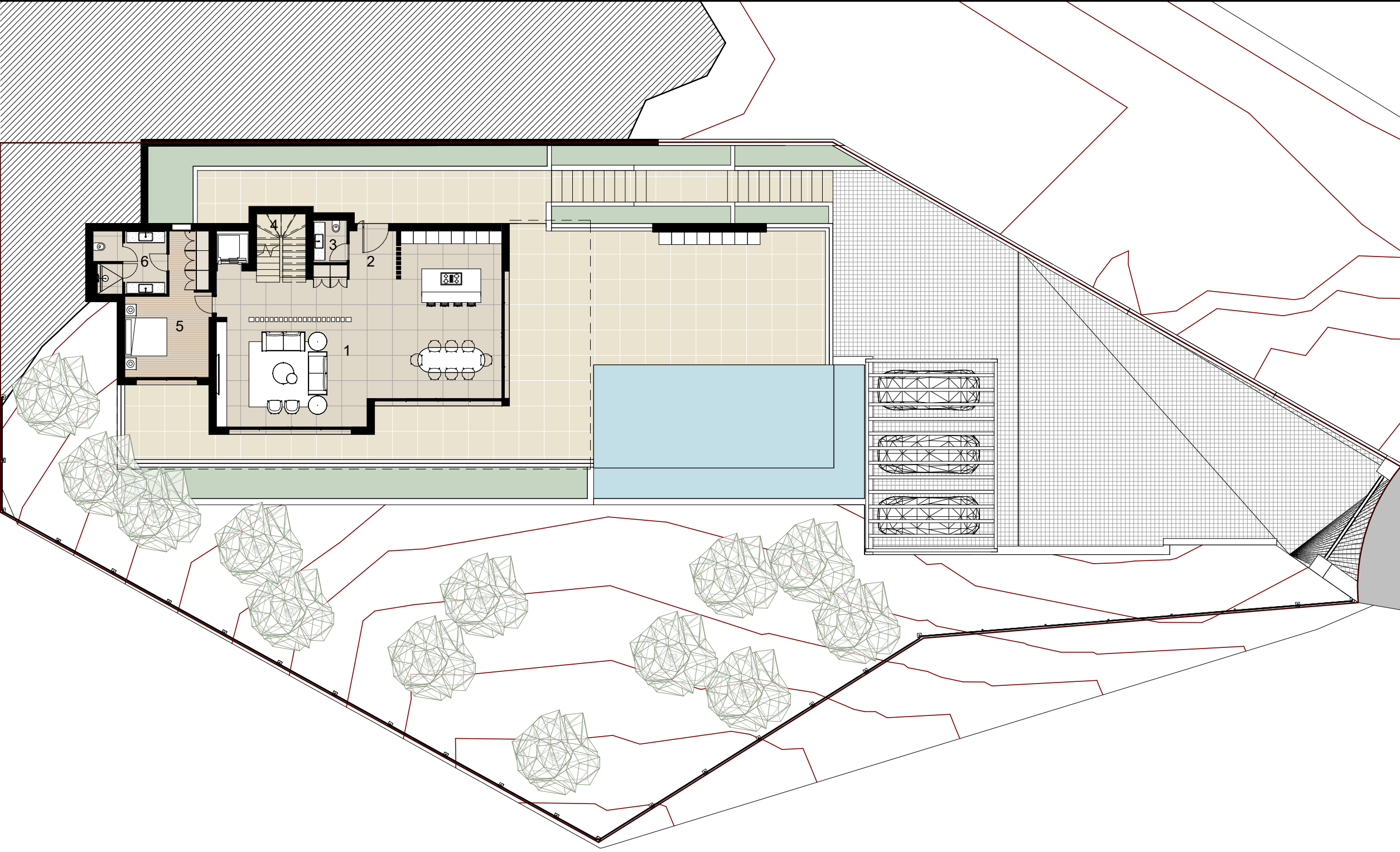
**BASEMENT FLOOR** 



Plot surface:	1452.00 m <sup>2</sup>
Built area basement floor:	352.55 m <sup>2</sup>
Built area ground floor:	176.09 m <sup>2</sup>
Built area first floor:	179.89 m <sup>2</sup>
Built area roof floor:	15.55 m <sup>2</sup>
Total built area:	724.08 m <sup>2</sup>

Bedrooms:	5
Bathrooms:	5
Toilets:	2
Parking space:	5

1 Kitchen - Living - Dining room	99.17 m <sup>2</sup>
2 Hall	5.13 m <sup>2</sup>
3 Toilet	3.21 m <sup>2</sup>
4 Stairs	7.29 m <sup>2</sup>
5 Bedroom 2	21.42 m <sup>2</sup>
6 Bathroom 2	10.09 m <sup>2</sup>
Total	146.30 m <sup>2</sup>



**GROUND FLOOR**

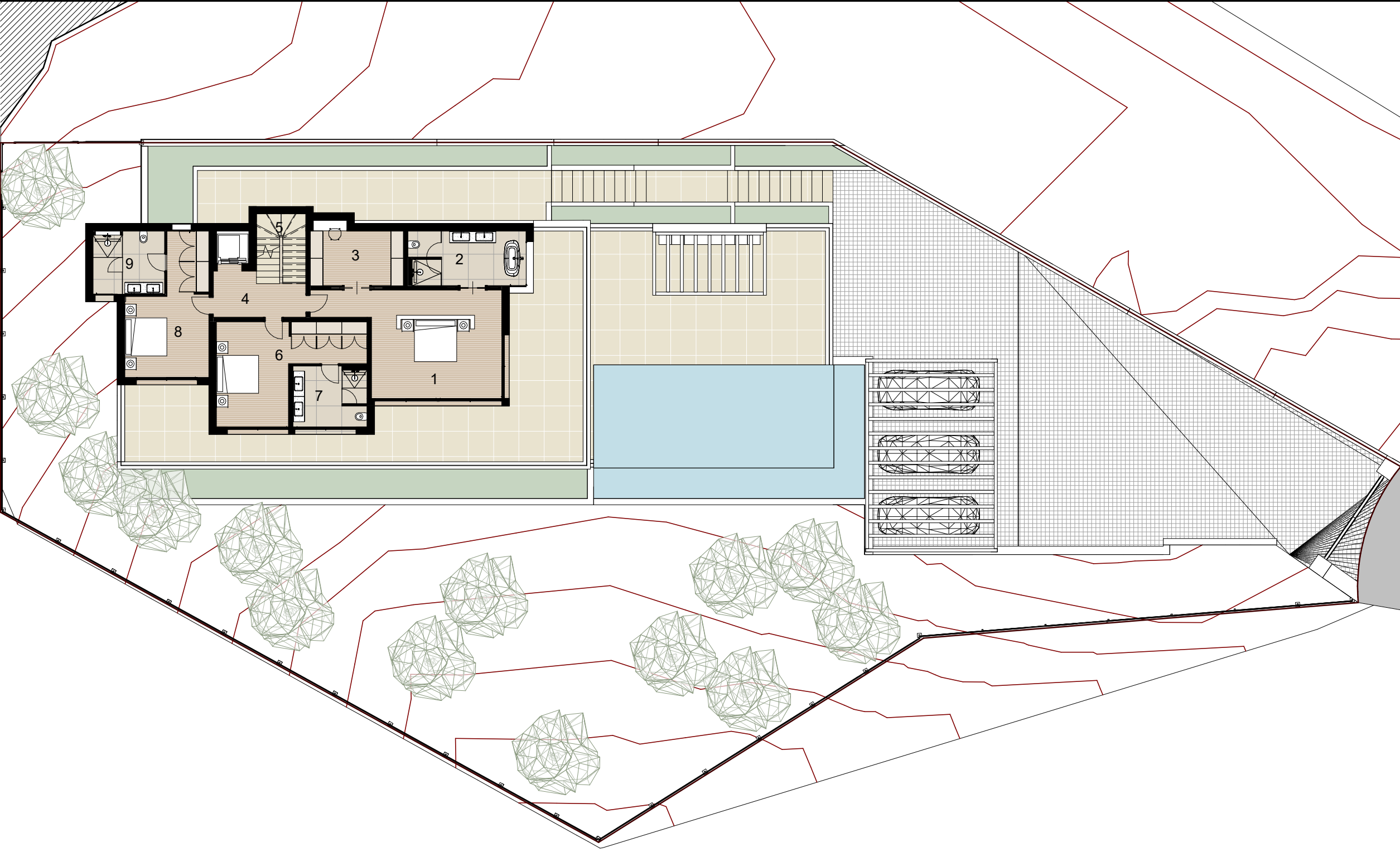




Plot surface:	1452.00 m <sup>2</sup>
Built area basement floor:	352.55 m <sup>2</sup>
Built area ground floor:	176.09 m <sup>2</sup>
Built area first floor:	179.89 m <sup>2</sup>
Built area roof floor:	15.55 m <sup>2</sup>
Total built area:	724.08 m <sup>2</sup>

Bedrooms:	5
Bathrooms:	5
Toilets:	2
Parking space:	5

1 Master bathroom	34.75 m <sup>2</sup>
2 Master bedroom	14.19 m <sup>2</sup>
3 Walk-in closet	12.33 m <sup>2</sup>
4 Corridor	8.98 m <sup>2</sup>
5 Stairs	7.07 m <sup>2</sup>
6 Bedroom 3	24.58 m <sup>2</sup>
7 Bathroom 3	9.98 m <sup>2</sup>
8 Bedroom 4	21.54 m <sup>2</sup>
9 Bathroom 4	9.92 m <sup>2</sup>
<b>Total</b>	<b>143.33 m<sup>2</sup></b>



FIRST FLOOR



# THE VILLAS

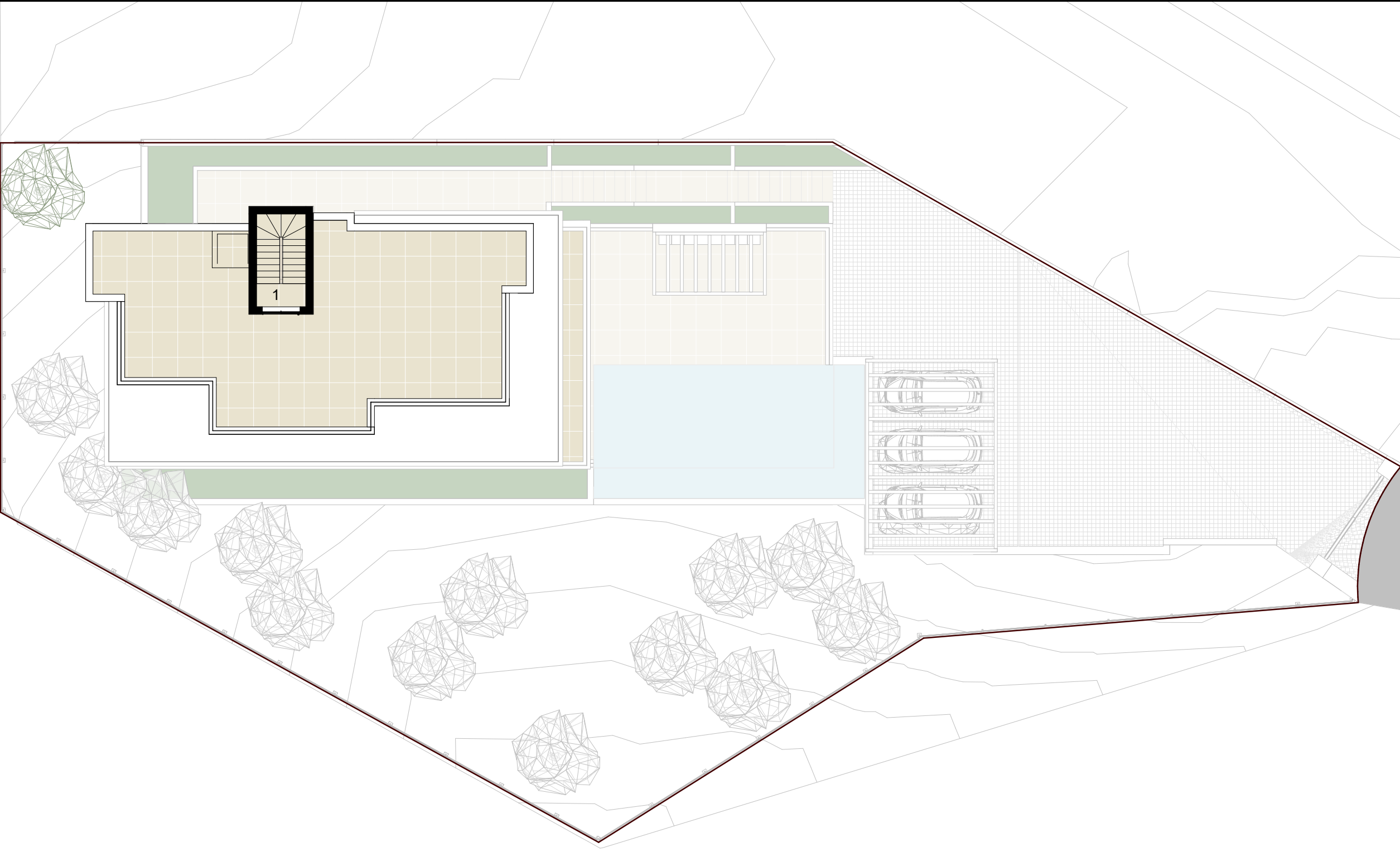
LOS ALTOS DE  
LOS MONTEROS

# J6A

Plot surface:	1452.00 m <sup>2</sup>
Built area basement floor:	352.55 m <sup>2</sup>
Built area ground floor:	176.09 m <sup>2</sup>
Built area first floor:	179.89 m <sup>2</sup>
Built area roof floor:	15.55 m <sup>2</sup>
Total built area:	724.08 m <sup>2</sup>

Bedrooms:	5
Bathrooms:	5
Toilets:	2
Parking space:	5

1 Stairs	10.34 m <sup>2</sup>
Total	10.34 m <sup>2</sup>



## ROOF FLOOR

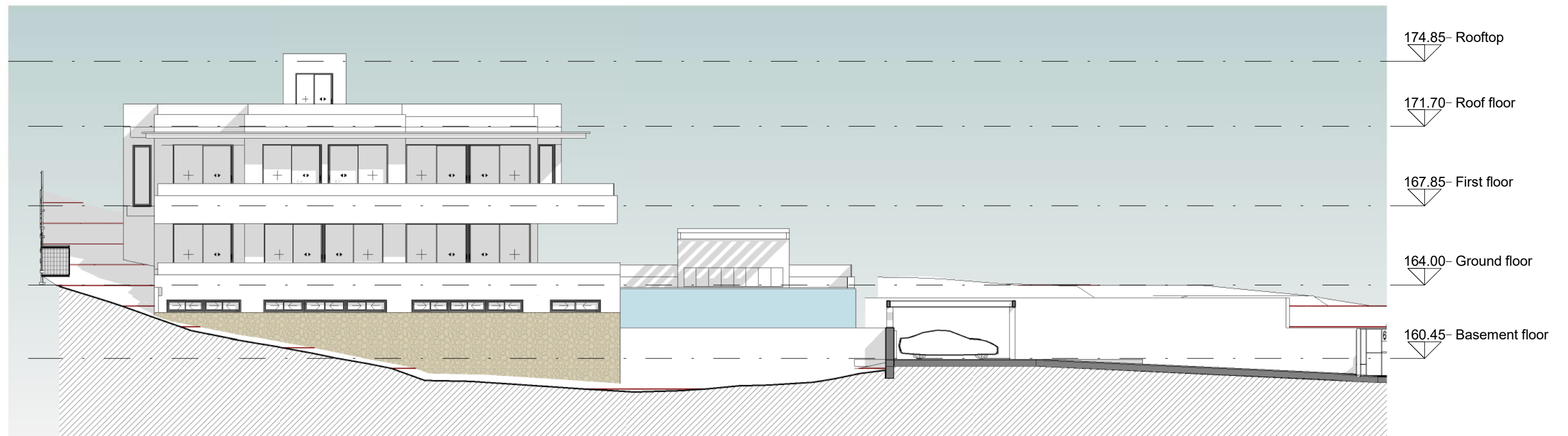


  
MARTÍNEZ GALVÁN  
ARQUITECTO



Plot surface:	1452.00 m <sup>2</sup>
Built area basement floor:	352.55 m <sup>2</sup>
Built area ground floor:	176.09 m <sup>2</sup>
Built area first floor:	179.89 m <sup>2</sup>
Built area roof floor:	15.55 m <sup>2</sup>
Total built area:	724.08 m <sup>2</sup>

Bedrooms:	5
Bathrooms:	5
Toilets:	2
Parking space:	5



## ELEVATION

