

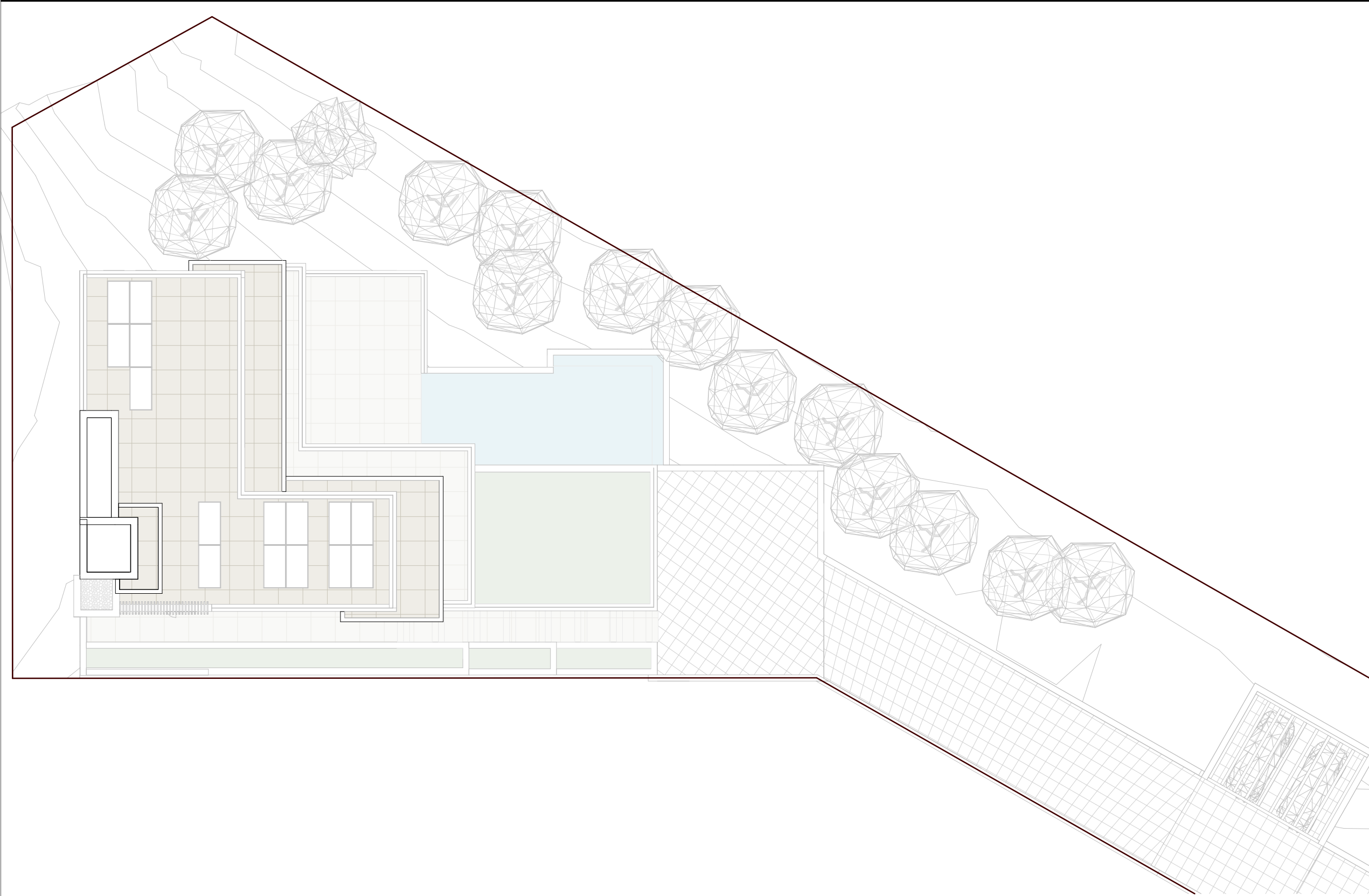
# THE VILLAS

LOS ALTOS DE  
LOS MONTEROS

# J6B

Plot surface:	1496.00 m <sup>2</sup>
Built area basement floor:	358.70 m <sup>2</sup>
Built area ground floor:	176.09 m <sup>2</sup>
Built area first floor:	179.89 m <sup>2</sup>
Built area roof floor:	15.55 m <sup>2</sup>
Total built area:	730.23 m <sup>2</sup>

Bedrooms:	4
Bathrooms:	4
Toilets:	1
Parking space:	4

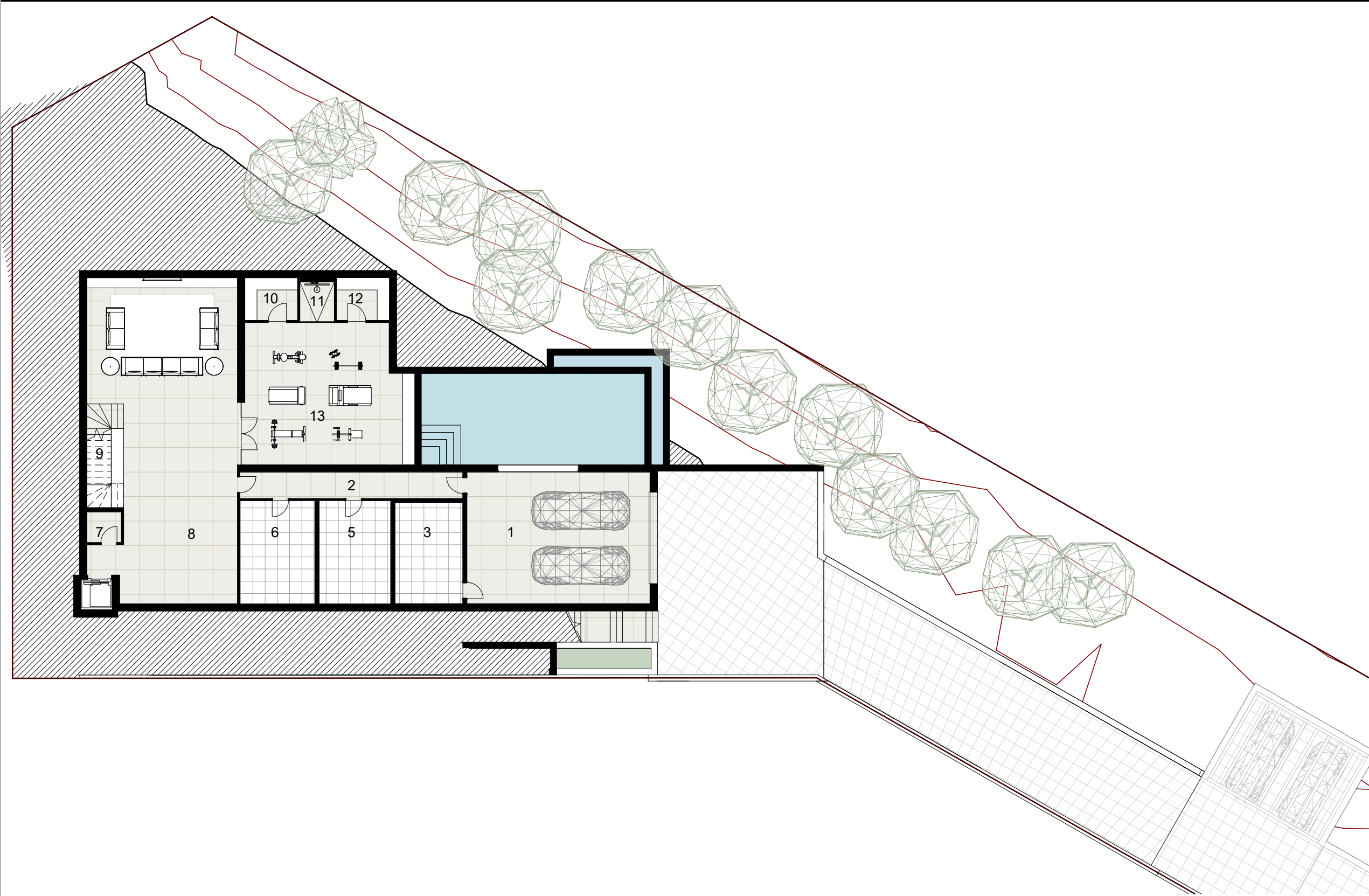


TOP VIEW



  
MARTÍNEZ GALVÁN  
ARQUITECTO





Plot surface:	1496.00 m <sup>2</sup>
Built area basement floor:	358.70 m <sup>2</sup>
Built area ground floor:	176.09 m <sup>2</sup>
Built area first floor:	179.89 m <sup>2</sup>
Built area roof floor:	15.55 m <sup>2</sup>
Total built area:	730.23 m <sup>2</sup>

Bedrooms:	4
Bathrooms:	4
Toilets:	1
Parking space:	4

1	Parking	58.18 m <sup>2</sup>
2	Hallway	14.25 m <sup>2</sup>
3	Technical room 1	16.56 m <sup>2</sup>
5	Storage 1	17.89 m <sup>2</sup>
6	Laundry	18.77 m <sup>2</sup>
7	Toilet	2.57 m <sup>2</sup>
8	Cinema room	103.85 m <sup>2</sup>
9	Stairs	9.27 m <sup>2</sup>
10	Sauna	5.46 m <sup>2</sup>
11	Shower	3.40 m <sup>2</sup>
12	Hammam	5.46 m <sup>2</sup>
13	Gym	55.30 m <sup>2</sup>
Total		310.94 m <sup>2</sup>

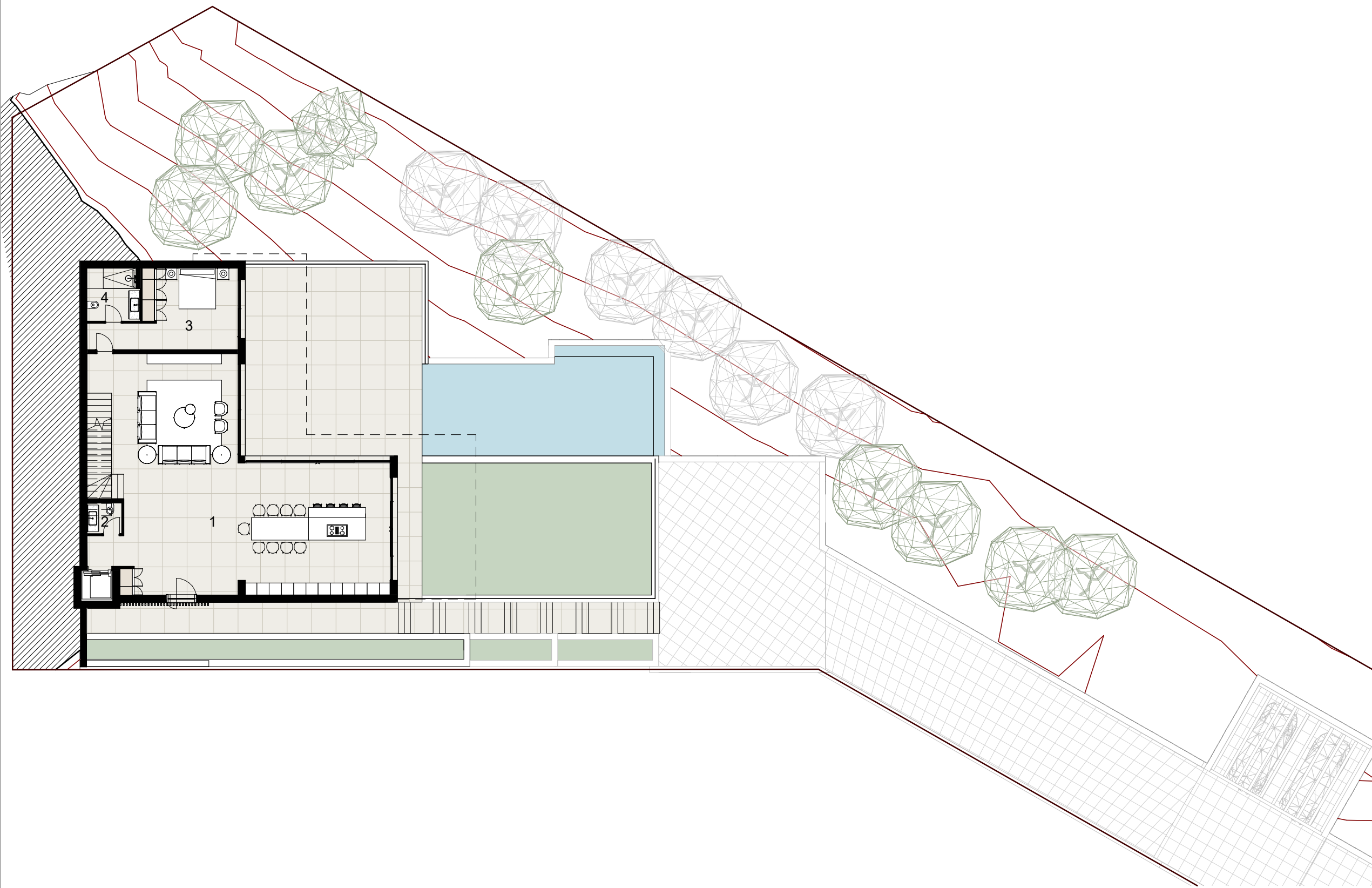
**BASEMENT FLOOR** 



# THE VILLAS

LOS ALTOS DE  
LOS MONTEROS

# J6B



Plot surface:	1496.00 m <sup>2</sup>
Built area basement floor:	358.70 m <sup>2</sup>
Built area ground floor:	176.09 m <sup>2</sup>
Built area first floor:	179.89 m <sup>2</sup>
Built area roof floor:	15.55 m <sup>2</sup>
Total built area:	730.23 m <sup>2</sup>

Bedrooms:	4
Bathrooms:	4
Toilets:	1
Parking space:	4

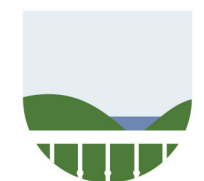
1 Kitchen - Living - Dining room	130.10 m <sup>2</sup>
2 Toilet	2.56 m <sup>2</sup>
3 Bedroom 1	22.25 m <sup>2</sup>
4 Bathroom 1	6.58 m <sup>2</sup>
Total	161.50 m <sup>2</sup>

## GROUND FLOOR



  
**MARTÍNEZ GALVÁN**  
ARQUITECTO

ALTOS DE  
LOS  
MONTEROS



Living between sensations



# THE VILLAS

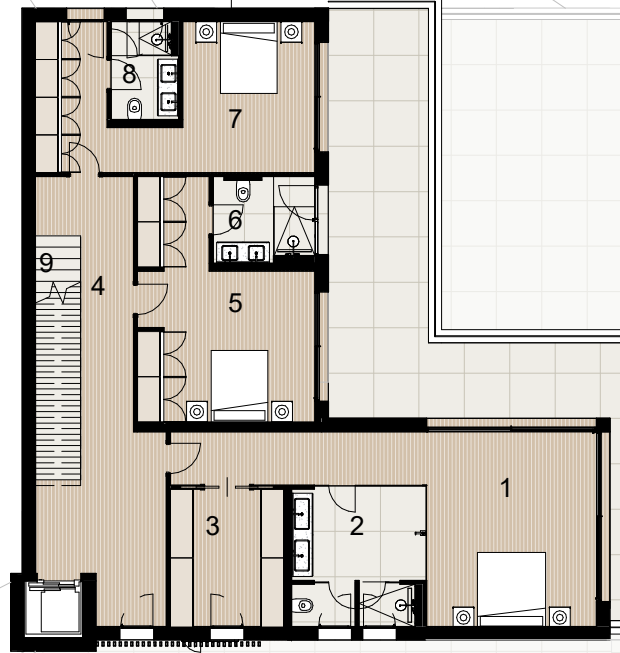
LOS ALTOS DE  
LOS MONTEROS

# J6B

Plot surface:	1496.00 m <sup>2</sup>
Built area basement floor:	358.70 m <sup>2</sup>
Built area ground floor:	176.09 m <sup>2</sup>
Built area first floor:	179.89 m <sup>2</sup>
Built area roof floor:	15.55 m <sup>2</sup>
Total built area:	730.23 m <sup>2</sup>

Bedrooms:	4
Bathrooms:	4
Toilets:	1
Parking space:	4

1 Master bedroom	32.85 m <sup>2</sup>
2 Master bathroom	12.17 m <sup>2</sup>
3 Walk-in closet	10.94 m <sup>2</sup>
4 Corridor	25.43 m <sup>2</sup>
5 Bedroom 2	23.55 m <sup>2</sup>
6 Bathroom 2	5.89 m <sup>2</sup>
7 Bedroom 3	24.01 m <sup>2</sup>
8 Bathroom 3	4.50 m <sup>2</sup>
9 Stairs	7.90 m <sup>2</sup>
Total	147.25 m <sup>2</sup>



## FIRST FLOOR



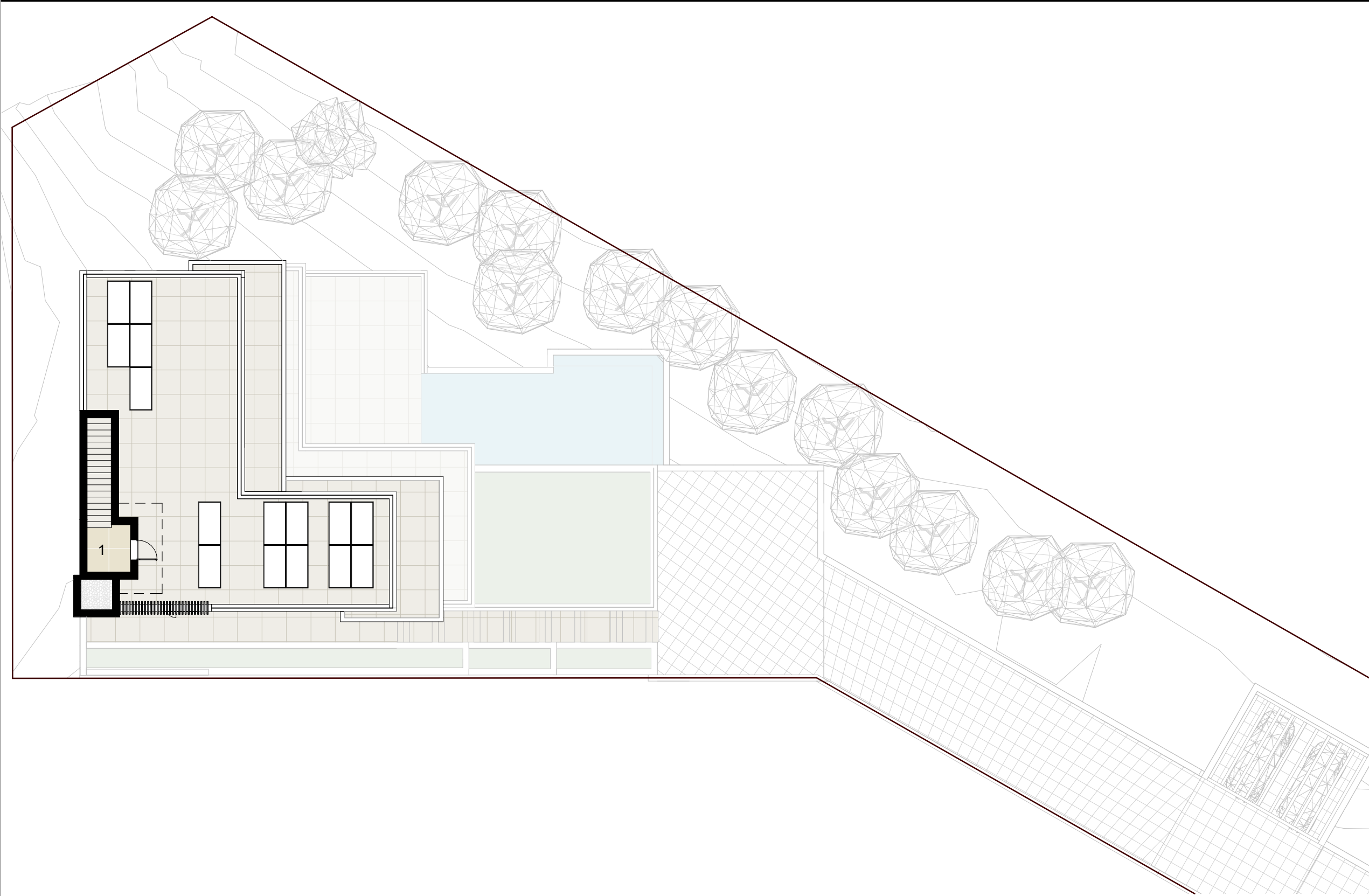
  
**MARTÍNEZ GALVÁN**  
ARQUITECTO



# THE VILLAS

LOS ALTOS DE  
LOS MONTEROS

# J6B



Plot surface:	1496.00 m <sup>2</sup>
Built area basement floor:	358.70 m <sup>2</sup>
Built area ground floor:	176.09 m <sup>2</sup>
Built area first floor:	179.89 m <sup>2</sup>
Built area roof floor:	15.55 m <sup>2</sup>
Total built area:	730.23 m <sup>2</sup>

Bedrooms:	4
Bathrooms:	4
Toilets:	1
Parking space:	4

1 Stairs	11.27 m <sup>2</sup>
Total	11.27 m <sup>2</sup>

## ROOF FLOOR

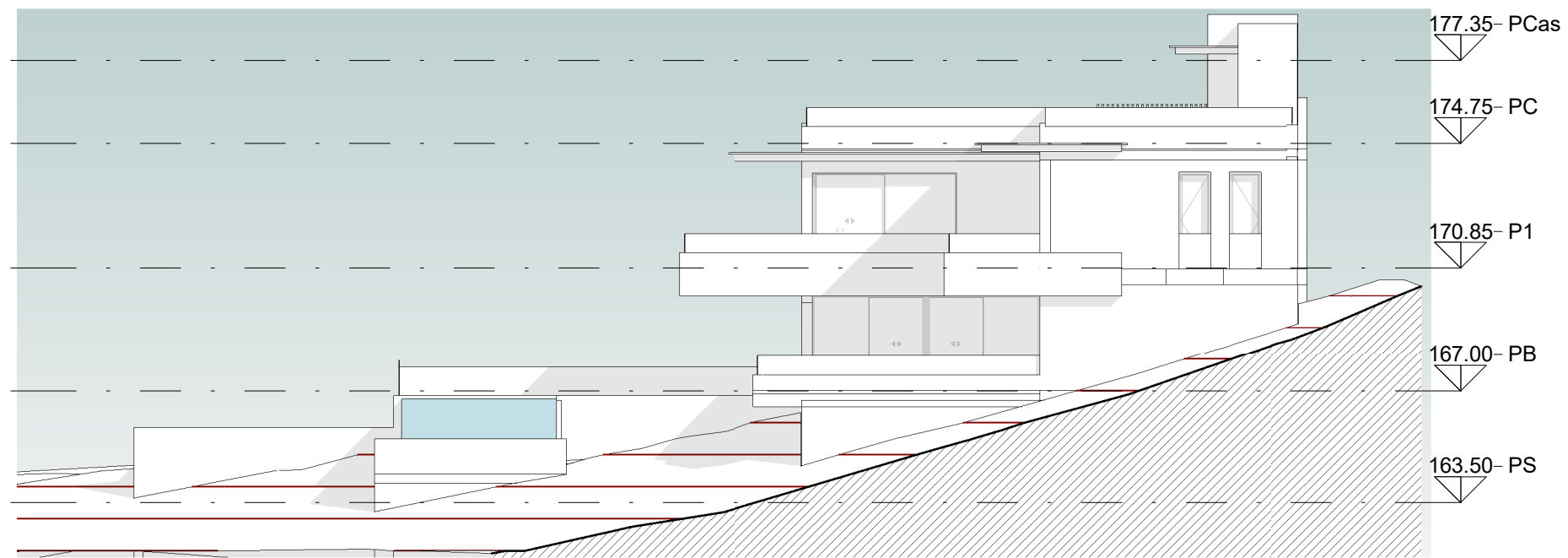


  
MARTÍNEZ GALVÁN  
ARQUITECTO



Plot surface:	1496.00 m <sup>2</sup>
Built area basement floor:	358.70 m <sup>2</sup>
Built area ground floor:	176.09 m <sup>2</sup>
Built area first floor:	179.89 m <sup>2</sup>
Built area roof floor:	15.55 m <sup>2</sup>
Total built area:	730.23 m <sup>2</sup>

Bedrooms:	4
Bathrooms:	4
Toilets:	1
Parking space:	4



1 Venta - Alzado  
V06 1 : 200

## TOP VIEW

